

# AXIS P1385-BE Box Camera

## 2 MP outdoor surveillance – barebone

With 2 MP resolution, a 1/2.8" sensor, Lightfinder 2.0, and Forensic WDR, AXIS P1385-BE delivers exceptional image quality even in challenging light conditions. Including a deep learning processing unit, it offers support for advanced features and applications based on deep learning on the edge. AXIS Object Analytics can detect and classify humans, vehicles, and types of vehicles. Axis Edge Vault, a hardware-based cybersecurity platform, safeguards the device and protects sensitive information from unauthorized access. This lightweight barebone unit comes without lens and mounting for maximum flexibility allowing you to create a unique camera to meet your specific requirements.

- > [Barebone unit ready to customize](#)
- > [Exceptional images with 1/2.8" sensor](#)
- > [Lightfinder 2.0 and Forensic WDR](#)
- > [Analytics with deep learning](#)
- > [Built-in cybersecurity with Axis Edge Vault](#)



# AXIS P1385-BE Box Camera

|                              |   |  |   |
|------------------------------|---|--|---|
| <b>Camera</b>                |   | <b>Network</b>                           |   |
| <b>Image sensor</b>          | 1/2.8" progressive scan RGB CMOS<br>Pixel size 2.9 µm   | <b>Network protocols</b>                 | IPv4, IPv6 USGv6, ICMPv4/ICMPv6, HTTP, HTTPS <sup>b</sup> , HTTP/2, TLS <sup>b</sup> , QoS Layer 3 DiffServ, FTP, SFTP, CIFS/SMB, SMTP, mDNS (Bonjour), UPnP <sup>®</sup> , SNMP v1/v2c/v3 (MIB-II), DNS/DNSv6, DDNS, NTP/NTS, RTSP, RTP, SRTP/RTSPS, TCP, UDP, IGMPv1/v2/v3, RTCP, ICMP, DHCPv4/v6, ARP, SSH, LLDP, CDP, MQTT v3.1.1, Secure syslog (RFC 3164/5424, UDP/TCP/TLS), Link-Local address (ZeroConf), IEEE 802.1X (EAP-TLS), IEEE 802.1AR   |
| <b>Lens</b>                  | Lens not included   | <b>System integration</b>                |   |
| <b>Day and night</b>         | Automatically removable infrared-cut filter   | <b>Application Programming Interface</b> | Open API for software integration, including VAPIX <sup>®</sup> , metadata and AXIS Camera Application Platform (ACAP); specifications at <a href="https://axis.com/developer-community">axis.com/developer-community</a> . ACAP includes Native SDK and Computer Vision SDK.<br>One-click cloud connection<br>ONVIF <sup>®</sup> Profile G, ONVIF <sup>®</sup> Profile M, ONVIF <sup>®</sup> Profile S, and ONVIF <sup>®</sup> Profile T, specifications at <a href="https://onvif.org">onvif.org</a>  |
| <b>Minimum illumination</b>  | 1080p 25/30 fps with Forensic WDR and Lightfinder 2.0:<br>Color: 0.05 lux at 50 IRE, F1.4<br>B/W: 0.01 lux at 50 IRE, F1.4<br>1080p 50/60 fps with Lightfinder 2.0:<br>Color: 0.1 lux at 50 IRE, F1.4<br>B/W: 0.02 lux at 50 IRE, F1.4<br>1080p 25/30 fps with Forensic WDR and Lightfinder 2.0:<br>With optional F0.9 lens<br>Color: 0.02 lux at 50 IRE, F0.9<br>B/W: 0.005 lux at 50 IRE, F0.9              | <b>Video management systems</b>          | Compatible with AXIS Companion, AXIS Camera Station, video management software from Axis' Application Development Partners available at <a href="https://axis.com/vms">axis.com/vms</a>   |
| <b>Shutter speed</b>         | 1/37000 s to 2 s with 50 Hz<br>1/37000 s to 2 s with 60 Hz  | <b>Onscreen controls</b>                 | Electronic image stabilization<br>Day/night shift<br>Defogging<br>Wide dynamic range<br>Video streaming indicator<br>Autofocus<br>Privacy masks<br>Media clip<br>Heater   |
| <b>System on chip (SoC)</b>  |   | <b>Edge-to-edge</b>                      | Microphone pairing<br>Speaker pairing   |
| <b>Model</b>                 | ARTPEC-8  | <b>Event conditions</b>                  | Audio: audio detection, audio clip playing<br>Device status: above/below/within operating temperature, IP address removed/blocked, new IP address, network lost, system ready, ring power overcurrent protection, live stream active<br>Digital audio input status<br>Edge storage: recording ongoing, storage disruption, storage health issues detected<br>I/O: digital input, digital output, manual trigger, virtual input<br>MQTT: stateless<br>Scheduled and recurring: schedule<br>Video: average bitrate degradation, day-night mode, tampering |
| <b>Memory</b>                | 1024 MB RAM, 8192 MB Flash  | <b>Event actions</b>                     | Audio clips: play, stop<br>Day-night mode<br>I/O: toggle I/O once, toggle I/O while the rule is active<br>MQTT: publish<br>Notification: HTTP, HTTPS, TCP and email<br>Overlay text<br>Recordings: record, record while the rule is active<br>SNMP traps: send, send while the rule is active<br>Status LED: flash, flash while the rule is active<br>Upload of images or video clips: FTP, SFTP, HTTP, HTTPS, network share and email<br>WDR mode  |
| <b>Compute capabilities</b>  | Deep learning processing unit (DLPU)  | <b>Built-in installation aids</b>        | Leveling assistant, remote back focus   |
| <b>Video</b>                 |   | <b>Analytics</b>                         |   |
| <b>Video compression</b>     | H.264 (MPEG-4 Part 10/AVC) Baseline, Main and High Profiles<br>H.265 (MPEG-H Part 2/HEVC) Main Profile<br>Motion JPEG   | <b>Applications</b>                      | <b>Included:</b><br>AXIS Object Analytics, Scene metadata, AXIS Live Privacy Shield <sup>®</sup> , AXIS Video Motion Detection<br><b>Supported:</b><br>AXIS Perimeter Defender, AXIS License Plate Verifier, AXIS Speed Monitor<br>Support for AXIS Camera Application Platform enabling installation of third-party applications, see <a href="https://axis.com/acap">axis.com/acap</a>  |
| <b>Resolution</b>            | 1920x1080 to 160x90   | <b>AXIS Object Analytics</b>             | <b>Object classes:</b> humans, vehicles (types: cars, buses, trucks, bikes)<br><b>Scenarios:</b> line crossing, object in area, time in area, crossline counting, occupancy in area<br>Up to 10 scenarios<br><b>Other features:</b> triggered objects visualized with trajectories, color-coded bounding boxes and tables<br>Polygon include/exclude areas<br>Perspective configuration   |
| <b>Frame rate</b>            | With forensic WDR: Up to 25/30 fps (50/60 Hz) in all resolutions<br>No WDR: Up to 50/60 fps (50/60 Hz) in all resolutions   |  |   |
| <b>Video streaming</b>       | Up to 20 unique and configurable video streams <sup>a</sup><br>Axis Zipstream technology in H.264 and H.265<br>Controllable frame rate and bandwidth<br>VBR/ABR/MBR H.264/H.265<br>Low latency mode<br>Video streaming indicator  |  |   |
| <b>Signal-to-noise ratio</b> | >55 dB  |  |   |
| <b>WDR</b>                   | Forensic WDR: Up to 120 dB depending on scene   |  |   |
| <b>Multi-view streaming</b>  | Up to 8 individually cropped out view areas   |  |   |
| <b>Noise reduction</b>       | Spatial filter (2D noise reduction)<br>Temporal filter (3D noise reduction)   |  |   |
| <b>Image settings</b>        | Contrast, brightness, sharpness, white balance, day/night threshold, tone mapping, exposure mode, exposure zones, defogging, barrel distortion correction, compression, rotation: 0°, 90°, 180°, 270° including corridor format, mirroring, text and image overlay, dynamic text and image overlay, privacy masks, polygon privacy mask, target aperture<br>Scene profiles: forensic, vivid, traffic overview |  |   |
| <b>Image processing</b>      | Axis Zipstream, Forensic WDR, Lightfinder 2.0   |  |   |
| <b>Pan/Tilt/Zoom</b>         | Digital PTZ, preset positions<br>Preset position tour, control queue, on-screen directional indicator<br>Guard tour (max 100)   |  |   |
| <b>Audio</b>                 |   |  |   |
| <b>Audio features</b>        | Automatic gain control<br>Speaker pairing   |  |   |
| <b>Audio streaming</b>       | Configurable duplex:<br>One-way (simplex)<br>Two-way (half duplex, full duplex)   |  |   |
| <b>Audio input</b>           | Input for external unbalanced microphone, optional 5 V microphone power<br>Digital input, optional 12 V ring power<br>Unbalanced line input   |  |   |
| <b>Audio output</b>          | Output through speaker pairing  |  |   |
| <b>Audio encoding</b>        | 24bit LPCM, AAC-LC 8/16/32/48 kHz, G.711 PCM 8 kHz, G.726 ADPCM 8 kHz, Opus 8/16/48 kHz   |  |   |

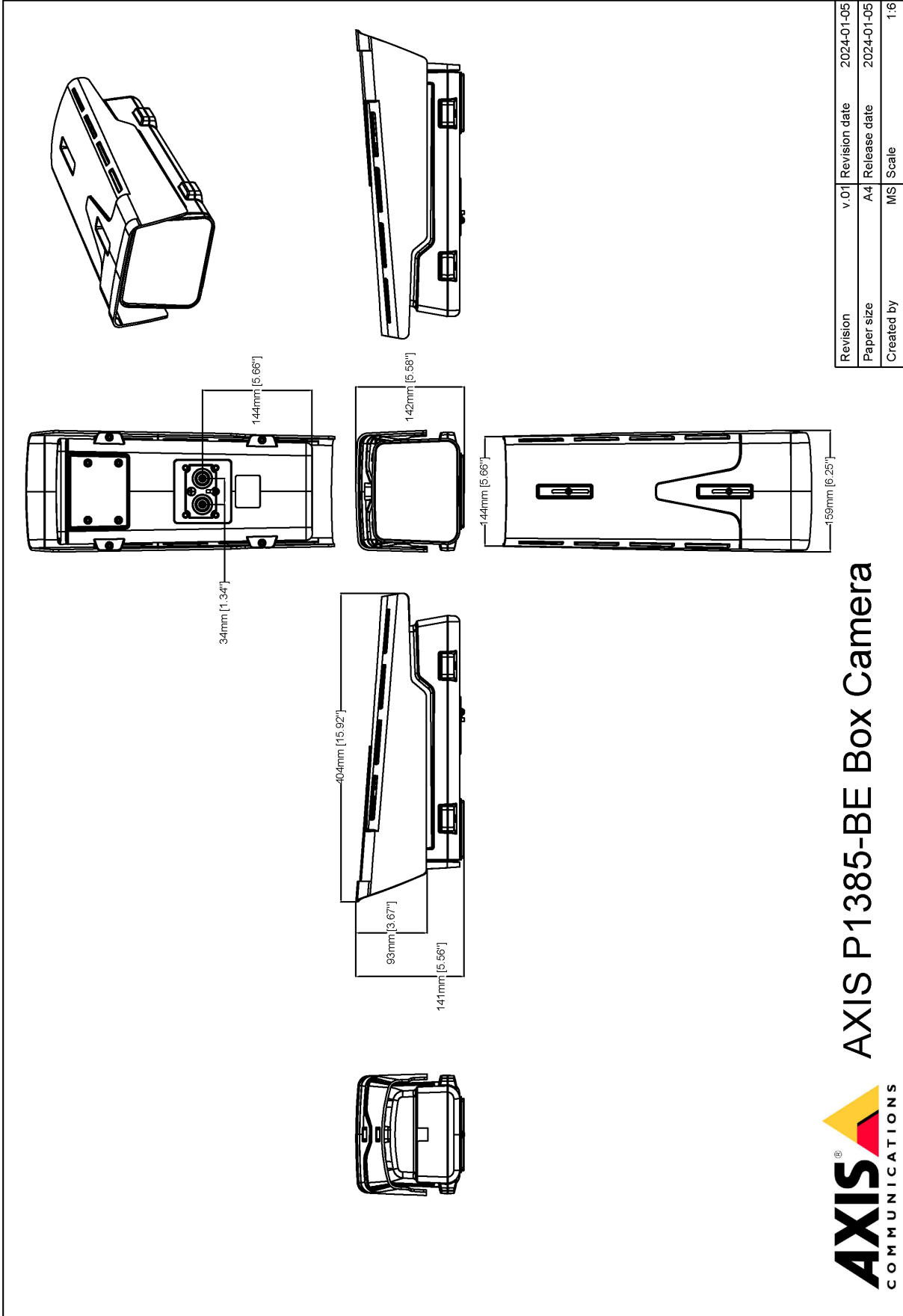
|                         |   |
|-------------------------|---|
|                         | ONVIF Motion Alarm event  |
| <b>Scene metadata</b>   | Object classes: humans, faces, vehicles (types: cars, buses, trucks, bikes), license plates<br>Object attributes: confidence, position  |
| <b>Approvals</b>        |   |
| <b>Product markings</b> | UL/cUL, UKCA, CE, KC, EAC, VCCI, RCM  |
| <b>Supply chain</b>     | TAA compliant   |
| <b>EMC</b>              | CISPR 35, CISPR 32 Class A, EN 55035, EN 55032 Class A, EN 50121-4, EN 61000-6-1, EN 61000-6-2<br>Japan: VCCI Class A<br>Korea: KS C 9835, KS C 9832 Class A<br>USA: FCC Part 15 Subpart B Class A  |
| <b>Safety</b>           | CAN/CSA C22.2 No. 62368-1 ed. 3, IEC/EN/UL 62368-1 ed. 3, IS 13252  |
| <b>Environment</b>      | IEC 60068-2-1, IEC 60068-2-2, IEC 60068-2-6, IEC 60068-2-14, IEC 60068-2-27, IEC 60068-2-78, IEC/EN 60529 IP66/IP67, IEC/EN 62262 IK10, ISO 4892-2 NEMA 250 Type 4X, NEMA TS 2 (2.2.7-2.2.9)  |
| <b>Network</b>          | NIST SP500-267, IPv6 USGv6  |
| <b>Cybersecurity</b>    | ETSI EN 303 645, FIPS 140   |
| <b>Cybersecurity</b>    |   |
| <b>Edge security</b>    | <b>Software:</b> Signed firmware, brute force delay protection, digest authentication and OAuth 2.0 RFC6749 OpenID Authorization Code Flow for centralized ADFS account management, password protection<br><b>Hardware:</b> Axis Edge Vault cybersecurity platform<br>Secure element (CC EAL 6+), Axis device ID, secure keystore, signed video, secure boot  |
| <b>Network security</b> | IEEE 802.1X (EAP-TLS, PEAP-MSCHAPv2) <sup>b</sup> , IEEE 802.1AR, HTTPS/HSTS <sup>b</sup> , TLS v1.2/v1.3 <sup>b</sup> , Network Time Security (NTS), X.509 Certificate PKI, IP address filtering   |
| <b>Documentation</b>    | <i>AXIS OS Hardening Guide</i><br><i>Axis Vulnerability Management Policy</i><br><i>Axis Security Development Model</i><br>AXIS OS Software Bill of Material (SBOM)<br>To download documents, go to <a href="https://axis.com/support/cybersecurity/resources">axis.com/support/cybersecurity/resources</a><br>To read more about Axis cybersecurity support, go to <a href="https://axis.com/cybersecurity">axis.com/cybersecurity</a> |
| <b>General</b>          |   |
| <b>Casing</b>           | IP66-, IP67-, NEMA 4X- and IK10-rated<br>Aluminum and plastic casing<br>Weathershield with black anti-glare coating<br>Color: white NCS S 1002-B<br>For repainting instructions, go to the product's support page. For information about the impact on warranty, go to <a href="https://axis.com/warranty-implication-when-repainting">axis.com/warranty-implication-when-repainting</a> . This product can be repainted.               |
| <b>Power</b>            | Power over Ethernet (PoE) IEEE 802.3af/802.3at Type 2 Class 4<br>Typical 3.87 W, max 25.5 W<br>10–28 V DC, typical 3.58 W, max 25.5 W   |
| <b>Connectors</b>       | Network: Shielded RJ45 10BASE-T/100BASE-TX/1000BASE-T PoE I/O: 6-pin 2.5 mm terminal block for 2 supervised alarm inputs and 2 outputs (12 V DC output, max load 50 mA)<br>Audio: 3.5 mm mic/line in<br>Serial communication: RS485/RS422, 2 pcs, 2 pos, full duplex, terminal block  |

Power: DC input, terminal block  
Lens: i-CS connector (compatible with P-Iris and DC-iris)  
AXIS T92G20 connector

|                                     |  |
|-------------------------------------|--|
| <b>Storage</b>                      | Support for microSD/microSDHC/microSDXC card<br>Support for SD card encryption (AES-XTS-Plain64 256bit)<br>Recording to network-attached storage (NAS)<br>For SD card and NAS recommendations see <a href="https://axis.com">axis.com</a>                                    |
| <b>Operating conditions</b>         | –40 °C to 60 °C (–40 °F to 140 °F)<br>Humidity 10–100% RH (non-condensing)<br>Wind load (sustained): 55 m/s (123 mph)  |
| <b>Storage conditions</b>           | –40 °C to 65 °C (–40 °F to 149 °F)<br>Humidity 5–95% RH (non-condensing)   |
| <b>Dimensions</b>                   | For the overall product dimensions, see the dimension drawing in this datasheet.<br>Effective Projected Area (EPA): 0.04 m <sup>2</sup> (0.13 ft <sup>2</sup> )  |
| <b>Weight</b>                       | 2200 g (4.9 lb)  |
| <b>Box content</b>                  | Camera, installation guide, terminal block connector, owner authentication key   |
| <b>Optional accessories</b>         | AXIS Microphones, AXIS Midspans<br>AXIS CS mount lenses<br>AXIS T8415 Wireless Installation Tool<br>AXIS Surveillance Cards<br>For more accessories, go to <a href="https://axis.com/products/axis-p1385-be#accessories">axis.com/products/axis-p1385-be#accessories</a>     |
| <b>System tools</b>                 | AXIS Site Designer, AXIS Device Manager, AXIS Device Manager Extend, product selector, accessory selector, lens calculator<br>Available at <a href="https://axis.com">axis.com</a>   |
| <b>Languages</b>                    | English, German, French, Spanish, Italian, Russian, Simplified Chinese, Japanese, Korean, Portuguese, Polish, Traditional Chinese, Dutch, Czech, Swedish, Finnish, Turkish, Thai, Vietnamese   |
| <b>Warranty</b>                     | 5-year warranty, see <a href="https://axis.com/warranty">axis.com/warranty</a>   |
| <b>Part numbers</b>                 | Available at <a href="https://axis.com/products/axis-p1385-be#part-numbers">axis.com/products/axis-p1385-be#part-numbers</a>   |
| <b>Sustainability</b>               |  |
| <b>Substance control</b>            | PVC free, BFR/CFR free in accordance with JEDEC/ECA Standard JS709<br>RoHS in accordance with EU RoHS Directive 2011/65/EU and EN 63000:2018<br>REACH in accordance with (EC) No 1907/2006. For SCIP UUID, see <a href="https://echa.europa.eu">echa.europa.eu</a>           |
| <b>Materials</b>                    | Renewable carbon-based plastic content: 36% (bio-based)<br>Screened for conflict minerals in accordance with OECD guidelines<br>To read more about sustainability at Axis, go to <a href="https://axis.com/about-axis/sustainability">axis.com/about-axis/sustainability</a> |
| <b>Environmental responsibility</b> | <a href="https://axis.com/environmental-responsibility">axis.com/environmental-responsibility</a><br>Axis Communications is a signatory of the UN Global Compact, read more at <a href="https://unglobalcompact.org">unglobalcompact.org</a>                                 |

- We recommend a maximum of 3 unique video streams per camera or channel, for optimized user experience, network bandwidth, and storage utilization. A unique video stream can be served to many video clients in the network using multicast or unicast transport method via built-in stream reuse functionality.
- This product includes software developed by the OpenSSL Project for use in the OpenSSL Toolkit. ([openssl.org](https://openssl.org)), and cryptographic software written by Eric Young ([eyay@cryptsoft.com](mailto:eyay@cryptsoft.com)).
- Available for download

# Dimension drawing



## AXIS P1385-BE Box Camera

|            |      |               |            |
|------------|------|---------------|------------|
| Revision   | v.01 | Revision date | 2024-01-05 |
| Paper size | A4   | Release date  | 2024-01-05 |
| Created by | MS   | Scale         | 1:6        |

© 2024 Axis Communications

www.axis.com

## Highlighted capabilities

### AXIS Object Analytics

AXIS Object Analytics is a preinstalled, multifeatured video analytics that detects and classifies humans, vehicles, and types of vehicles. Thanks to AI-based algorithms and behavioral conditions, it analyzes the scene and their spatial behavior within – all tailored to your specific needs. Scalable and edge-based, it requires minimum effort to set up and supports various scenarios running simultaneously.

### Axis Edge Vault

Axis Edge Vault is the hardware-based cybersecurity platform that safeguards the Axis device. It forms the foundation that all secure operations depend on and offers features to protect the device's identity, safeguard its integrity from factory and protect sensitive information from unauthorized access.

Establishing the root of trust starts at the device's boot process. In Axis devices, the hardware-based mechanism **secure boot** verifies the operating system (AXIS OS) that the device is booting from. AXIS OS, in turn, is cryptographically signed (**signed firmware**) during the build process. Secure boot and signed firmware tie into each other and ensure that the firmware has not been tampered with during the lifecycle of the device and that the device only boots from authorized firmware. This creates an unbroken chain of cryptographically validated software for the chain of trust that all secure operations depend on.

From a security aspect, the **secure keystore** is the critical building-block for protecting cryptographic information used for secure communication (IEEE 802.1X, HTTPS, Axis device ID, access control keys etc.) against malicious extraction in the event of a security breach. The secure keystore is provided through a Common Criteria and/or FIPS 140 certified hardware-based cryptographic computing module. Depending on security requirements, an Axis device can have either one or multiple such modules, like a TPM 2.0 (Trusted Platform Module) or a secure element, and/or a system-on-chip (SoC) embedded Trusted Execution Environment (TEE).

**Signed video** ensures that video evidence can be verified as untampered without proving the chain of custody of the

video file. Each camera uses its unique video signing key, which is securely stored in the secure keystore, to add a signature into the video stream. This allows video to be traced back to the Axis camera from where it originated, so it's possible to verify that the footage has not been tampered with after it left the camera.

To read more about Axis Edge Vault, go to [axis.com/solutions/edge-vault](https://axis.com/solutions/edge-vault).

### Electronic image stabilization

Electronic image stabilization (EIS) provides smooth video in situations where a camera is subject to vibrations. Built-in gyroscopic sensors continuously detect the camera's movements and vibrations, and they automatically adjust the frame to ensure you always capture the details you need. Electronic image stabilization relies on different algorithms for modeling camera motion, which are used to correct the images.

### Forensic WDR

Axis cameras with wide dynamic range (WDR) technology make the difference between seeing important forensic details clearly and seeing nothing but a blur in challenging light conditions. The difference between the darkest and the brightest spots can spell trouble for image usability and clarity. Forensic WDR effectively reduces visible noise and artifacts to deliver video tuned for maximal forensic usability.

### Lightfinder

The Axis Lightfinder technology delivers high-resolution, full-color video with a minimum of motion blur even in near darkness. Because it strips away noise, Lightfinder makes dark areas in a scene visible and captures details in very low light. Cameras with Lightfinder discern color in low light better than the human eye. In surveillance, color may be the critical factor to identify a person, an object, or a vehicle.

For more information, see [axis.com/glossary](https://axis.com/glossary)