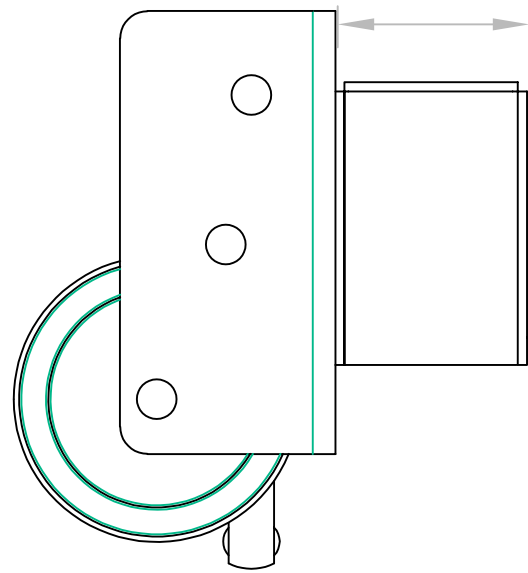
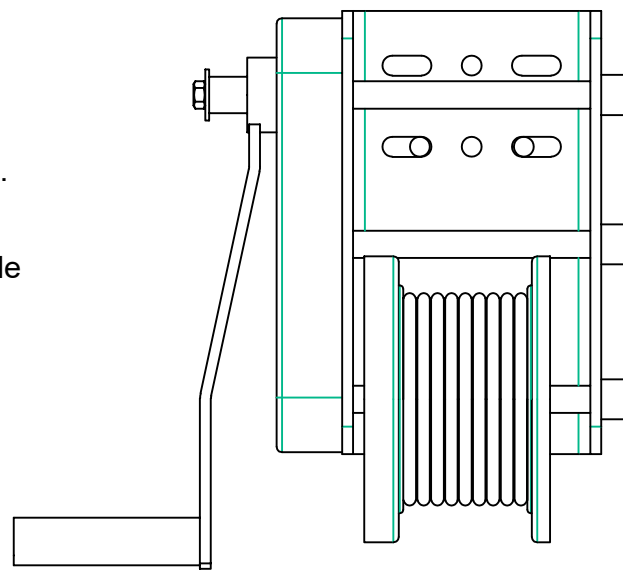


WUA/M 158
WUA 105



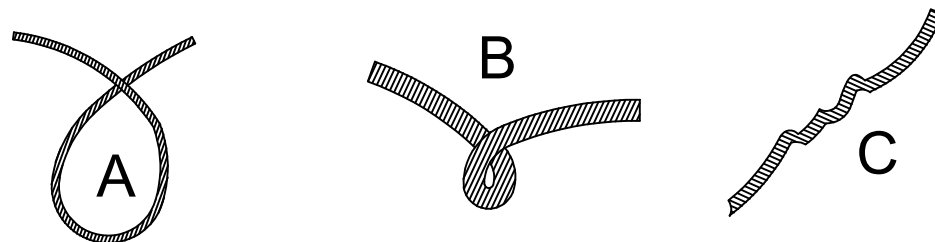
Maintenance:

- 1) Grease the main gear wheel on a regular basis.
- 2) Inspect the winch cable for signs of damage or deterioration with every operation.



Recognising Kinks:

- A) This is the start of a kink. At this time, the wire rope should be straightened.
- B) The wire rope was pulled and the loop has tightened to a kink. The wire rope has now been damaged and must be replaced.
- C) Kinking causes the wire rope strands under the greatest tension to break and thus reduces the load capacity of the wire rope. The wire rope must be replaced.



Important Notice:

Sufficient load must be applied to the cable to overcome internal resistance and operate the brake properly; otherwise turning the crank handle counter clockwise will only remove the handle from the shaft - the reel will not turn. The winch requires no more than 30 kg. to engage the brake.

WUA WEC Winch Unit Type A
WUA/M WEC Winch Unit Type A/M

This winch unit is designed and tested for use exclusively with the following WEC products and equipment:-

Tilt over lattice towers.

WD4, WD6, WD8, WD10, WD10HDAF

Demountable Columns.

TP4S TP5T TP6S TP8S

Demountable Columns.

TP4T TP5T TP6T TP8T TP10T

Demountable Columns.

For TP10S, TP10T, WDHD, TCTO10

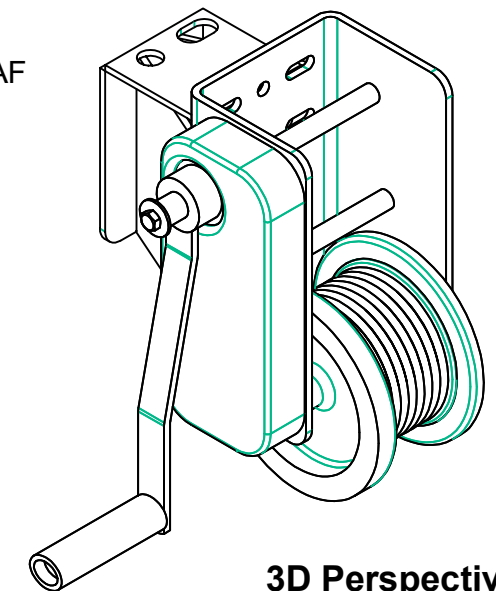
Use Winch Unit WUA/M

CBTO4 CBTO6 CBTO8

320 Cabinet Base Tilt-over

TCTO4 TCTO6 TCTO8 TCTO10 TCTO12

400 Town Centre Tilt-over



3D Perspective

DO NOT USE ON ANY OTHER PRODUCTS THAN THOSE STATED.

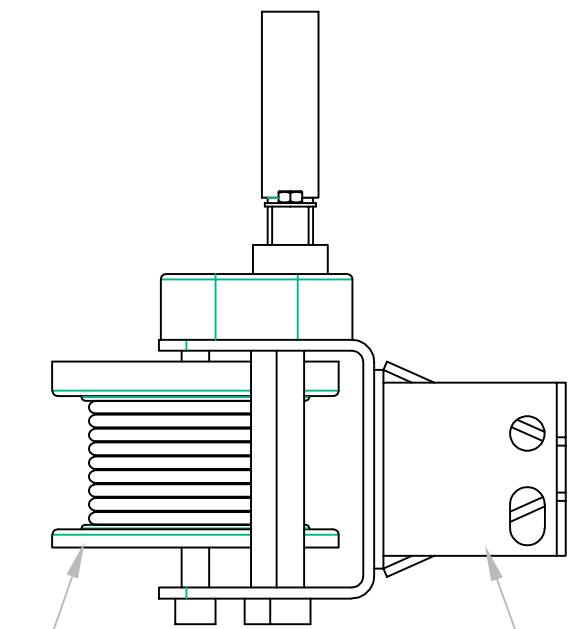
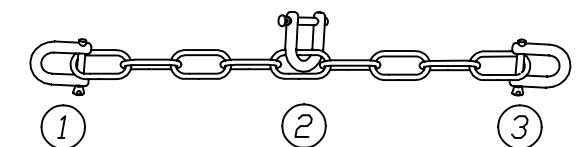
It is imperative that all operators are fully conversant with the operation and procedures of the product that the winch is to be used upon.

WEC recommends Winch Training and offers suitable courses for operators

SAFETY CHAIN NOTE:

When using on lattice towers use full length of chain (1 - 3)

When using on columns use half length of chain (1 - 2)



Brake Winch 2500lb
Aqua Marine Ref 08058

Universal Winch/Pole
Mount Bracket shown

Notes:

WEC Dimensions = mm Quality Standard: BS EN 1090 / Execution Class: EXC1 Scale: Not to scale

DRN: JK CHKD 26/09/19 CUSTOMER:



This drawing / document is copyright and sole property of WEC Group Ltd. Therefore as such the contents may not either in whole or in part be passed to a third party without first obtaining permission from WEC Group Ltd.

WEC Group Limited

CCTV- Division:
Britannia House, Junction street, Darwen, Lancashire BB3 2RB
Tel: 01254 700200 Fax: 01254 873637
Website: www.wec.uk.net - Email: all@wec.uk.net

ANGLE PROJECTION



TITLE: WUA Winch Unit Type Heavy Duty Brake Winch

DRG NO: **WEC - 008 - 0647**

ISS: **03**