

H.265 Series User Manual

Table of Contents

Summary	3
Key Features	3
Trademarks & Acknowledgments	3
Other References	4
Mobile devices.....	4
LILIN Universal ActiveX Control	4
LILIN HTTP API	4
Disclaimer	4
Caution.....	4
Chapter 1 System Overview	5
Chapter 1-1 System Requirements	5
Chapter 1-2 Software Requirements.....	5
Chapter 1-2-1 Apple Mac OS	5
Chapter 1-2-2 PC Windows OS	5
Chapter 2 Before Accessing IP Cameras	5
Chapter 2-1 Configure IP Addresses using the IPScan Utility	6
Chapter 2-2 Configure IP Addresses through HTML Connection	6
Chapter 2-3 Web Browser Settings & Software Components Required	7
Chapter 2-4 Login	7
Chapter 3 LILIN IP Camera Operations	8
Chapter 3-1 HTML Operations	8
Chapter 3-2 Quick Buttons	9
Chapter 3-2-1 Two-way Audio	10
Chapter 3-2-2 Record to a Local PC	10
Chapter 3-3 Software Dewarping Panoramic Camera	10
Chapter 4 Basic Settings	11
Chapter 4-1 System.....	11
Chapter 4-1-1 General	11
Chapter 4-1-2 User	12
Chapter 4-1-3 Timer Settings	12
Chapter 4-1-4 OSD Settings	13
Chapter 4-2 Video / Audio	14
Chapter 4-2-1 General	14
Chapter 4-2-2 Smart H.264/H.265	15
Chapter 4-2-3 Quality Basic	16
Chapter 4-3 Network	17
Chapter 4-3-1 General	17
Chapter 4-3-2 IPv6	18
Chapter 4-3-3 HTTP/RTSP Service	18
Chapter 4-3-4 HTTPs	19
Chapter 4-3-5 IP Address Filtering	19
Chapter 4-3-6 DDNS	19
Chapter 4-3-7 SNMP	20
Chapter 4-3-8 SIP VoIP	20
Chapter 4-4 Maintenance	21
Chapter 5 Advance Mode	21
Chapter 5-1 System.....	21
Chapter 5-1-1 System Log	22
Chapter 5-2 Video/Audio Settings	22
Chapter 5-2-1 Quality Advanced	22

Chapter 5-2-1-1 Sense Up+	23
Chapter 5-2-1-2 HDR vs WDR	24
Chapter 5-2-1-3 P-Iris	24
Chapter 5-2-2 White Balance Control (AWB)	26
Chapter 5-2-3 Auto Focus	26
Chapter 5-2-4 Day/Night Mode Switch	26
Chapter 5-2-5 ROI	27
Chapter 5-2-6 Privacy Masking	27
Chapter 5-2-7 Audio Adjust	27
Chapter 5-2-8 Lens Distortion Correction	28
Chapter 5-3 Network	28
Chapter 5-3-1 Multicast	29
Chapter 5-3-2 IP Address Filtering	29
Chapter 5-3-3 UPnP Settings	29
Chapter 5-3-4 Bonjour	30
Chapter 5-3-5 SDDP/Heartbeat	30
Chapter 5-3-6 MAC Address Filtering	30
Chapter 5-3-7 IEEE 802.1x	30
Chapter 5-4 Camera Event	31
Chapter 5-4-1 IVS	32
Chapter 5-4-2 Motion Detection	32
Chapter 5-4-3 Face Detection	32
Chapter 5-4-4 Tampering Detection	33
Chapter 5-4-5 Audio Detection	33
Chapter 5-4-6 Alarm Detection	34
Chapter 5-4-7 Network Detection	34
Chapter 5-4-8 Push Service Setting	34
Chapter 5-5 Camera Notification	35
Chapter 5-5-1 FTP Service	35
Chapter 5-5-2 SMTP (Email) Service	36
Chapter 5-5-3 HTTP POST Service	36
Chapter 5-5-4 SD Card Service	37
Chapter 5-5-5 SD Card Backup	37
Chapter 5-5-6 SAMBA Service	37
Chapter 5-5-7 MQTT Service	38
Appendix	39
DDNS and PPPoE Network Settings	39
Advanced Port Forwarding Technology	39
Restore to Factory Default	39
SD Card Compatibility	40
For iPhone Users	40
For Android Users	41



Summary

LILIN P2 and Z2 series IP cameras are high performance 2MP and 5MP day and night auto focus camera range. LILIN IP Cameras adopt the latest H.265 compression technologies, which allow multiple streaming of H.264/H.265 or MJPEG formats in 1080p and 5MP resolutions. LILIN's multiple streaming technology transmits digital video at various bit rates and frame rates to suit both high and low bandwidth network environments.

F2R3682IM & F2R36C2IM are ImmerVision certified 8MP and 12MP panoramic H.264/H.265 cameras. F2R3682IM & F2R36C2IM can compatible with third-party VMS software having ImmerVision library supported. ImmerVision dewarping VMS or NVR software can provide excellent dewarping video quality and ePTZ feature for recording playback.

LILIN IP cameras are equipped with an intelligent video analytics (IVS) engine that features tripwire, sound detection, tampering detection, and motion detection, in which advanced alarm information can be integrated by other applications. LILIN IP cameras provide various alarm notifications including SD card recording, mobile device live access, email notification with JPEG snapshots, MQTT, SNMP, HTTP push notification, and JPEG-to-FTP upload.

The combination of LILIN Navigator software and IP cameras will maximize your system performance and deliver an integrated system solution for your migration to IP videos.

Key Features

- Supports various encoding formats (H.264/H.265 and MJPEG)
- Built-in intelligent video analytics engine that can send Email or FTP snapshot alarms
- Day/night video quality independent scheduling
- Audio and motion detection
- Two-way audio
- Bit rate and frame rate on-the-fly adjustment
- Support Android, iPad, and iPhone mobile live monitoring
- Support dynamic DNS (DDNS) and network time protocol (NTP)
- Support HTTP API integration
- Support G.711 and AAC
- Support ONVIF protocol
- Support LILIN Navigator

Trademarks & Acknowledgments

Microsoft, Windows 2000, Windows XP, Windows Vista, Windows 7, ActiveX, and Internet Explorer are registered trademarks of Microsoft Corporation in the U.S. and/or other countries. Java and all Java-based trademarks and logos are trademarks or registered trademarks of Sun Microsystems, Inc. in the United States and other countries. Flash, Macromedia, and Macromedia Flash Player are either trademarks or registered trademarks of Adobe Systems Incorporated in the United States and/or other countries. Linux and DynDNS are registered trademarks of the respective holders. Intel, Pentium, and Intel® Core™ 2 Duo are registered trademarks of Intel Corporation. FFmpeg is a trademark of [Fabrice Bellard](#), originator of the FFmpeg project. QuickTime and the QuickTime logo are trademarks or registered trademarks of Apple Computer, Inc., used under license therefrom. Other names of companies and their products mentioned in this manual may be trademarks or registered trademarks of their respective owners.



Other References

Mobile devices

For mobile surveillance, refer to the detail page of LILINViewer on Apple App Store or Google Play.

LILIN Universal ActiveX Control

Sample codes and documents are included in the product CD and can be downloaded from our company website.

LILIN HTTP API

For non-ONVIF integration, see the LILIN HTTP API document. HTTP API is used in all LILIN IP cameras.

Disclaimer

To prevent possible unauthorized access to this device, please change the default admin password. Failure to do so may leave this device vulnerable, compromising your privacy. By using the camera, you accept responsibility for establishing and maintaining the security of this device on your network(s) and the wider internet. Please document the new password in a safe place. Forgetting the new password means you will no longer be able to access this network device and will need to perform a hardware reset to restore the default username and password.

Please be aware that this user manual may cover a range of product specifications for various models. Characteristics and features discussed and/or illustrated in this manual may not be applicable or available to all models. We reserve the right to change product specifications, designs and equipment without notice and without incurring obligation.

Caution

- Do not drop or damage the equipment
- Do not install the equipment near fire or heat sources
- Keep the equipment from rain, moisture, smoke, or dust
- Do not cover the opening of the cabinet with cloth and/or plastic or install the unit in poorly ventilated places. Allow 10cm between this unit and its surroundings
- Do not continue to operate the unit under abnormal conditions such as smoke, odor, or loss of signal whilst power is turned on
- Do not touch the power cord with wet hands
- Do not damage the power cord or leave it under pressure
- To avoid unnecessary magnetic interference, do not operate this unit near magnets, speaker systems, etc.
- All connection cables should be grounded properly



Chapter 1 System Overview

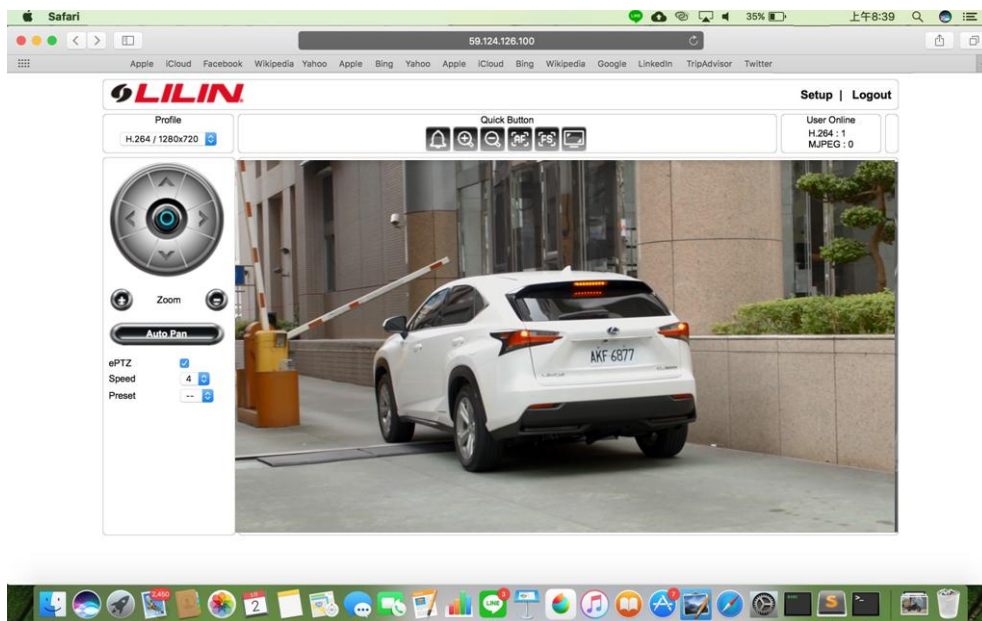
Chapter 1-1 System Requirements

LILIN's IP camera uses compression technology that provides high compression rate and superior video quality. However, video performance depends highly on CPU power and network bandwidth for video streaming. The following sections specify the system requirements for using LILIN IP cameras.

Chapter 1-2 Software Requirements

Chapter 1-2-1 Apple Mac OS

LILIN IP camera uses HTML5 streaming which supports Safari browser for accessing video streaming of the IP camera on Apple Mac OS without any software plug-in.



Chapter 1-2-2 PC Windows OS

Merit LILIN Universal ActiveX software components for a web browser to display MJPEG or H.264/H.265 video. When you first log in to our IP camera, you may see a prompt box as below via Windows OS.



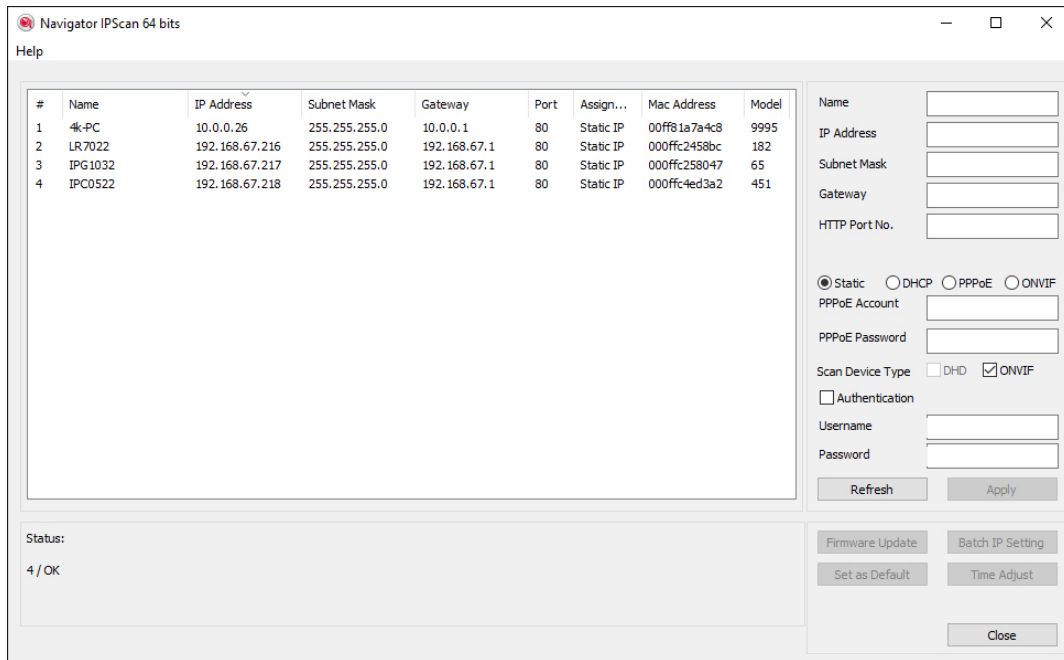
Chapter 2 Before Accessing IP Cameras

Before accessing the IP cameras, make sure that the camera's RJ-45 network connector, audio cable, and power cable are properly connected. To set the IP address, consult your network administrator. The default IP address for each IP camera is 192.168.0.200. Users can use the default IP address to verify the camera's network connection.

Chapter 2-1 Configure IP Addresses using the IPScan Utility

To configure the IP address of your cameras, download [IPScan](#) from our official website. Or, you can execute the IPScan installer from the installation CD directly. To change the IP address, subnet mask, gateway, or HTTP port of your cameras, follow the steps below:

- Run the IPScan utility
- Click **Refresh**. All available devices will be listed on the screen
- Select the device item from the device list
- To edit or modify IP address, subnet mask, gateway, or HTTP port, use the box
- Click **Apply** for the changes to take effect
- Click **Refresh** again to verify the changed settings



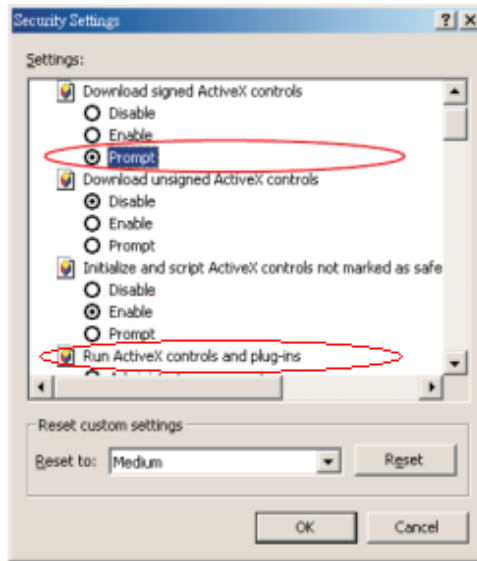
Chapter 2-2 Configure IP Addresses through HTML Connection

To change an IP address on a webpage, type the default IP address (192.168.0.200) into the browser address bar and follow the steps below:

- Log in to your LILIN IP camera using the default username **admin** and default password **pass**
- Click **Setup**→**Network** to edit or modify IP address, subnet mask, gateway, or HTTP port
- Click **Submit** for the changes to take effect.

Chapter 2-3 Web Browser Settings & Software Components Required

Make sure your Internet browser allows signed ActiveX plug-in to run on your PC. Set Download Signed ActiveX plug-in controls to Prompt and enable Run ActiveX control and plug-in. You can set this in Internet Explorer→Tools→Internet Options→Security→Custom Settings.



Once completed, you can access the IP camera's live video by entering the default IP address via a web browser. A security warning dialog box will appear. Click OK to download the ActiveX directly from the IP camera.

Chapter 2-4 Login

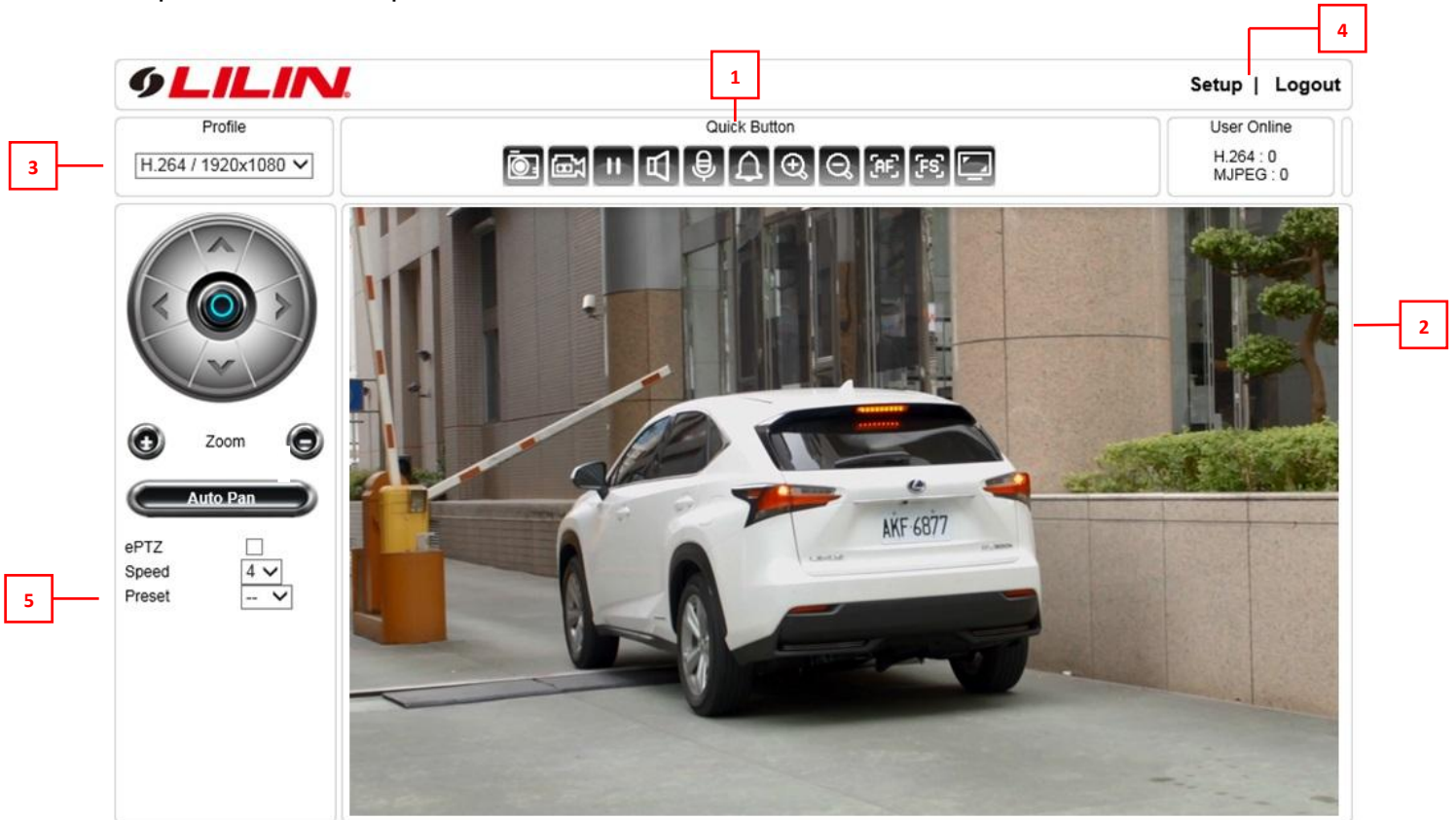
You can log in to the camera as administrator or guest. The default username for administrator is admin, and the password pass. Then press Submit to log in.



Chapter 3 LILIN IP Camera Operations

When logged in as an administrator, two main features are available: 1) camera operations and 2) configurations.

Chapter 3-1 HTML Operations



1. **Quick buttons:** IP camera shortcuts
2. **ActiveX display screen:** Display RTSP H.264 or MJPEG streaming video
3. **Profile switching menu:** Switching from one profile to another
4. **Setup buttons:** IP camera setup menu
5. **Zoom & Focus control panel**

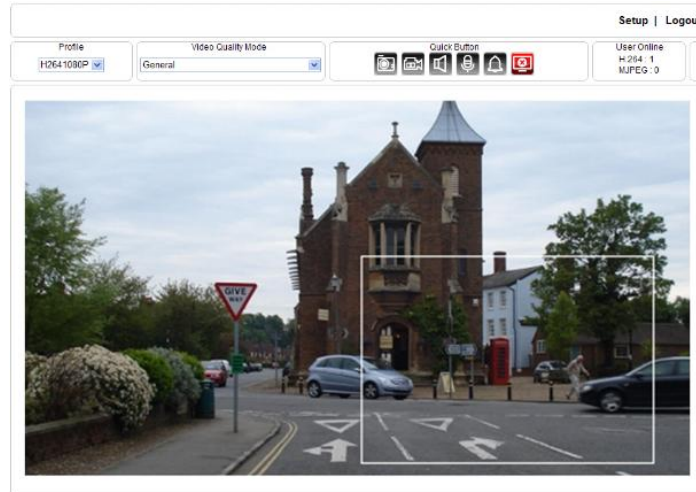
Control Functions

Zoom out
 Focus far
 Enable auto focus
 Zoom in
 Focus near

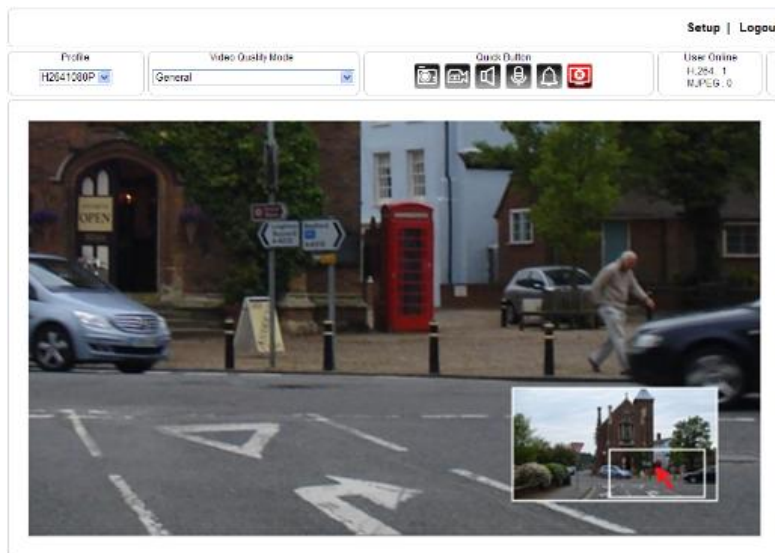
ROI Function

Enable ROI <input type="checkbox"/>	Check to enable ROI
Speed 4 ▼	Adjust the zoom and focus speed
Preset -- ▼	Move the screen to the chosen preset point

The ActiveX control provides an ePTZ (electronic Pan, Tilt, and Zoom) feature. To perform an ePTZ operation, hold and drag your mouse across the screen.







Move your cursor to the PIP window and drag inside it to perform ePan and eTilt actions. The scroll wheel can be used to zoom in and zoom out.



Right-click on the video to exit the ePTZ mode.

Chapter 3-2 Quick Buttons

The quick control panel buttons are described below:

	Take a snapshot of the video
	Start recording
	Pause recording
	Speaker on/off

	Microphone on/off
	Enlarge the live view

Chapter 3-2-1 Two-way Audio

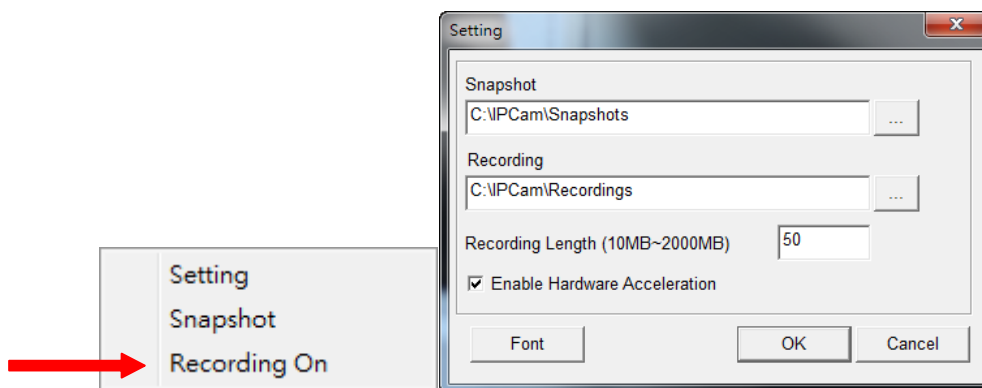
For models supporting two-way audio, click the microphone icon to speak to a remote site. Click the icon again to turn the microphone off.

Click the speaker icon to monitor the audio of a remote site. Click the icon again to turn the speaker off.

Note: Two-way audio model only

Chapter 3-2-2 Record to a Local PC

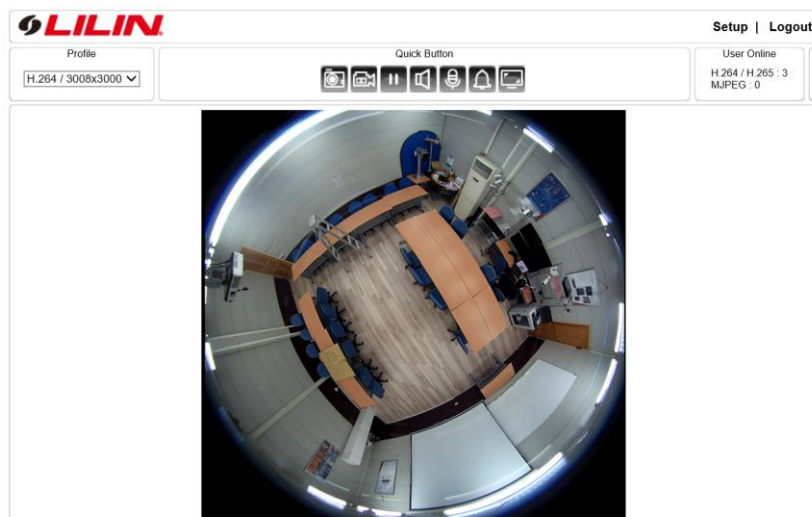
To record to a local PC, right-click anywhere on the screen. Choose Setting to specify the recording paths and recording sizes, and choose Recording On to start recording.



Note: ActiveX is for the use of IE11 on Windows OS only.

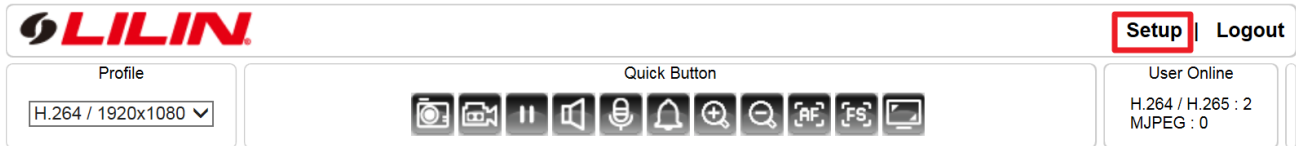
Chapter 3-3 Software Dewarping Panoramic Camera

For F2R3682IM & F2R36C2IM software dewarping panoramic camera, the user interface is shown below:



Chapter 4 Basic Settings

As an administrator, you can configure the IP camera via a standard HTML webpage. Click Setup at the top-right corner of the screen after you log in to the camera.



Chapter 4-1 System



Chapter 4-1-1 General

Under System Settings→General, you will see server system information, such as MAC address, firmware version, user settings, and system time settings. To modify these options, follow the instructions below:

Basic >> System >> General

MAC Address	00:0f:fc:57:02:18
Firmware Version	7.1.94.7595
OS Version	Linux 3.10.104+(Wed Mar 20 10:15:41 CST 2019)
System Reboot Time	2019/05/09 14:22:13
Device Name	<input type="text" value="Z2R8122X2-P-Main"/>
ActiveX OSD Display	<input type="radio"/> Enable <input checked="" type="radio"/> Disable
ActiveX OSD Name	<input type="text" value="Z2R8122X2-P"/>
Web Title Name	<input type="text" value="Z2R8122X2-P"/>
ActiveX Low Latency Mode	<input type="radio"/> Enable <input checked="" type="radio"/> Disable

- **MAC Address:** The MAC address of the camera
- **Firmware Version:** Firmware version of the camera
- **OS Version:** The version number of the camera
- **System Reboot Time:** The last time your system was rebooted.
- **Device Name:** The device name can be found using the IPscan utility, which allows you to identify IP cameras. To change the device name, enter a new name for the IP camera and click Submit.
- **ActiveX OSD Display:** Enable/disable to display/hide the device name.
- **ActiveX OSD Name:** The name you enter here will be displayed on the ActiveX
- **Web Title Name:** Enter the name to be displayed on the web browser.
- **ActiveX Low Latency Mode:** Enable to reduce latency of the ActiveX.

Note: ActiveX is for the use of IE11 on Windows OS only.

Chapter 4-1-2 User

The camera supports up to 10 user accounts. Each account can be individually configured for its access rights. To add/edit a user, click Add/Edit User. To access an IP camera without authentication, switch the Bypass Logon option to On. Enable IPScan Bypass Logon to log in the camera through IPScan without authentication. To add a user, press Add User, and you will see the following screen:

Basic >> System >> User

Bypass Logon On Off
 IPScan Bypass Logon On Off

Account
 New Password
 Confirm Password
 User Group Administrator , Operator , Viewer
 Administrator
 Panel Control
 ePTZ Control

Enter the account name and password for the new account, and then check to assign the access rights for this account.

To edit account information, click Edit User. To delete a user, click Remove User. Click Submit to update the settings.

Chapter 4-1-3 Timer Settings

You can change the time of your camera through a HTML web page. Simply select the date and time in the drop-down menus, and click Submit to apply. You may also set the daylight saving time and holiday list in this page.

Basic >> System >> Timer

Server Time Thu, 09 May 2019 14:43:26 GMT+0800
 Synchronize with NTP Every Hour Off
 Time Server time.stdtime.gov.tw
 Time Zone ((GMT +08:00) Taipei)
 Time 2019 / 5 / 9 14 : 43 : 26
 Daylight Saving Time On Off
 Start Date 1 / 1 / 0 (Month/Date/Hour)
 End Date 12 / 31 / 23 (Month/Date/Hour)
 Enable Holiday List

Synchronize with an NTP server

To synchronize with an NTP server, change the Synchronize with NTP to Every Hour. The camera will synchronize its system time with a time server every hour.

Note: This function requires Internet connection.

Chapter 4-1-4 OSD Settings

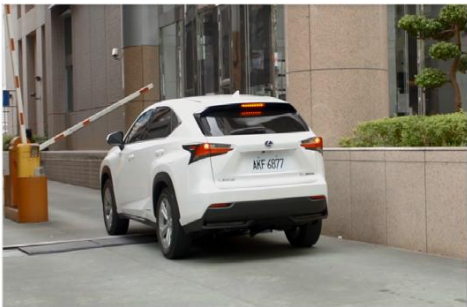
OSD (on screen display) is for the use of displaying system information on the video. There are features of date, camera ID, status, and watermark available.

Date	Camera ID	Status	Watermark
OSD <input checked="" type="radio"/> Enable <input type="radio"/> Disable			
Foreground Color <input type="text" value="WHITE"/>			
Background Color <input type="text" value="MAGENTA"/>			
Transparency 255 <input type="range" value="255"/> (40-255)			

Date	Camera ID	Status	Watermark
OSD <input checked="" type="radio"/> Enable <input type="radio"/> Disable			
Foreground Color <input type="text" value="GREEN"/>			
Background Color <input type="text" value="BLACK"/>			
Transparency 255 <input type="range" value="255"/> (40-255)			

Date	Camera ID	Status	Watermark
OSD <input checked="" type="radio"/> Enable <input type="radio"/> Disable			
Transparency 255 <input type="range" value="255"/> (40-255)			

Basic >> System >> OSD



OSD Font Size

Date	Camera ID	Status	Watermark
OSD <input type="radio"/> Enable <input checked="" type="radio"/> Disable			
Foreground Color <input type="text" value="WHITE"/>			
Background Color <input type="text" value="BLACK"/>			
Transparency 255			

Date, Camera ID, Status, and Watermark are described below:

- OSD Font Size: The size of the OSD text
- Foreground Color: The color of the text
- Background Color: The background color of the text
- Transparency: The transparency of the background color
- User Demand Data: User define OSD text

Chapter 4-2 Video / Audio

Chapter 4-2-1 General

To transmit video over a low bandwidth network such as the Internet, set the bit rate close to the actual upload bandwidth. The camera encodes frames based on the bit rate setting.

Basic >> Video / Audio >> General

H.264 Encoding Mode : Main Profile High Profile

Encoder2 : Enable Disable

Encoder3/TV Out : Disable/(TV Out Enable) Enable/(TV Out Disable)

Video Standard : 60Hz 50Hz

Image Enhance Mode :

Encoder1

Profile Name

Resolution

Output Frame Rate

GOP (Group of Pictures)

Stream Mode

Bit Rate

RTSP URL

Encoder2

Profile Name

Resolution

Output Frame Rate

GOP (Group of Pictures)

Stream Mode

Bit Rate

RTSP URL

Encoder3 Not in service because tv outputting now.

Encoder4

Profile Name

Resolution

Output Frame Rate

Image Quality

RTSP URL

- **Profiles:** 4 customizable profiles
- **Encoding Mode:** The selection of Main Profile or High Profile
- **Video Standard:** NTSC/PAL setting
- **Image Enhance Mode:** HDR mode
- **Profile Name:** The selection of H.264/H.265/MJPEG video compression
- **Resolution:** The resolution of the video stream
- **Output Frame Rate:** The frame rate of the video
- **GOP:** The number of I-frames to be displayed in one second
- **Stream Mode:** Variable bit rate, an encoding mode that reduces the use of bandwidth;
- CBR: constant bit rate, an encoding mode that consumes more bandwidth
- **Bit rate:** The maximum bit rate available for your network connection
- **RTSP URL:** Allow you to access the video stream via the Real Time Streaming Protocol
- **Image Quality:** The compression rate of the MJPEG stream

Chapter 4-2-2 Smart H.264/H.265

LILIN camera supports Smart H.264 for higher compression without sacrificing video quality. Choose Smart H.264/H.265 at Stream Mode.


Encoder1	
Profile Name	H.264 ▼
Resolution	1920x1080 ▼
Output Frame Rate	30 ▼
GOP (Group of Pictures)	30 ▼
Stream Mode	Smart ▼
SmartMode	Auto ▼
Foreground Quality	0 ▼ (Best:-15~Worst:15)
Background Quality	0 ▼ (Best:-15~Worst:15)
Sensitivity	30 ▼ (High:1~Low:99)
Bit Rate	3 Mbps ▼
RTSP URL	rtsp://192.168.0.36/stream0

From the picture below, Smart H.264 can have higher compression in bitrate at 1080P video. The foreground is the moving objects or the region of interest window. The background is the non-moving objects in a video.



To setup Smart H.264 feature, follow the steps below:

- **Stream Mode:** Select Smart H.264/H.265
- **Smart H.264 Mode:** Auto, Area, or Hybrid selection mode
- **Foreground Quality:** Moving object or Smart H.264/H.265 window
- **Background Quality:** Non-moving objects or none Smart H.264 defined windows
- **Sensitivity:** Smart H.264/H.265 moving objects (foreground) detection sensitivity, the higher sensitivity means higher compression rate.
- **Window Enable:** Enable Smart H.264/H.265 window.

Stream Mode	Smart
SmartMode	Area
Foreground Quality	0 (Best:-15~Worst:15)
Background Quality	0 (Best:-15~Worst:15)
Sensitivity	30 (High:1~Low:99)
Window Enable	<input checked="" type="checkbox"/> 1 <input type="checkbox"/> 2 <input type="checkbox"/> 3 <input type="checkbox"/> 4
	
Bit Rate	3 Mbps
RTSP URL	rtsp://192.168.0.200/stream0

Chapter 4-2-3 Quality Basic

This menu allows you to adjust brightness, auto contrast, contrast, hue, saturation, and sharpness both for the Day Mode and Night Mode. Individual day/night settings ensure the camera to provide optimal video quality.

Day Mode		Night Mode	
Mirror	On		
Flip	Off		
Rotate	Off		
3D Noise Reduction	10 (Low / High)		
Brightness	50 (Low / High)		
Contrast	50 (Low / High)		
Hue	50 (Low / High)		
Saturation	45 (Low / High)		
Sharpness	10 (Low / High)		
Load Default			

- **Mirror:** Mirror the video
- **Flip:** Flip the video
- **Rotate:** Rotate the video for corridor installation
- **3D Noise Reduction:** If the noise of the video is high at night, set the setting to high if needed.

Chapter 4-3-1 General

Network settings are the basic settings that connect LILIN IP cameras to the network. The default IP address of IP cameras is 192.168.0.200. Enter this IP address into your web browser to verify the network connection between a local PC and your IP camera.

To set up a local area network, enter the IP address, subnet mask, gateway, and DNS. Also enter account name and password if you are using PPPoE to connect to the network. Click Submit to update the settings.

To acquire Internet access, contact your local Internet Service Provider (ISP) for a global IP address. Enter the IP address (global), subnet mask, and gateway IP provided by your ISP.

- **Primary DNS** —The IP address of the default and first DNS server
- **Secondary DNS IP Address**—The IP address of the backup and second DNS server to the default DNS
- **PPPoE Account**—Username of the PPPoE service
- **PPPoE Password**—Password of the PPPoE service
- **QoS(DSCP)** —Based on DSCP standard, set the TCP/IP packet header for packet priority.

A router, gateway, or other DHCP software server can remotely assign an IP address to your IP camera. There is no need to manually configure the IP address, subnet mask, and gateway. However, every time the DHCP service is rebooted, the IP address of the IP camera may vary. You may need to use IPscan to search for the IP camera. To enable DHCP, click the DHCP option and click Submit.

Note: Once the DHCP option is enabled, the IP camera is assigned an IP address by the DHCP server. This feature is only permitted in LAN environments.

Basic >> Network >> General IPv6

Network On Off

IP Address /

Default Gateway

Primary DNS

Enter IPv6 IP address, default gateway, and default DNS for IPv6 service.

Chapter 4-3-3 HTTP/RTSP Service

HTTP and RTSP are two reliable protocols for video streaming. With correct port forwarding, videos can be sent over the Internet. Details are described in the appendix. To change the HTTP port number, consult your network administrator. Choose the streaming type you want to use (HTTP or RTSP/UDP). Click Submit for the changes to take effect.

Basic >> Network >> HTTP/RTSP Service

HTTP Port

RTSP Port

ONVIF search On Off

METADATA On Off

RTCP Check On Off

RTSP Authentication On Off

Encoder1

Encoder2

Encoder3 (TV Out)

Encoder4

Settings on this page are described below:

- **ONVIF search:** Choose an ONVIF protocol from the drop-down list
- **METADATA:** Enable/disable METADATA
- **RTCP Check:** Enable to send RTCP packages for transmission optimization
- **RTSP Authentication:** Enabling this option will require username and password when connecting to the RTSP stream
- **Encoder:** Change encoder name.

Chapter 4-3-4 HTTPs

HTTPS Service	<input checked="" type="radio"/> Enable <input type="radio"/> Disable
HTTPS Port	<input type="text" value="443"/>
Status	Not installed
Method	<input type="text" value="Create self-signed certificate"/>
Country	<input type="text" value="TW"/>
State or province	<input type="text" value="Taiwan"/>
Locality	<input type="text" value="Taipei"/>
Organization	<input type="text" value="IPCAM"/>
Organization unit	<input type="text" value="IPCAM"/>
Common name	<input type="text" value="www.example.com"/>
Validity	<input type="text" value="365"/>
<input type="button" value="Create certificate"/>	

Chapter 4-3-5 IP Address Filtering

To block an IP address for accessing the camera, enable IP Address Filtering feature. Add the IP address for blocking the IP address connecting the camera. Visit System->System Log for the IP addresses.

IP Address Filtering	<input checked="" type="radio"/> Enable <input type="radio"/> Disable	
IP Address	<input type="text"/> <input type="button" value="Add"/> <input type="button" value="Delete"/>	
<table border="1"> <tr> <td>59.124.43.21</td> </tr> </table>		59.124.43.21
59.124.43.21		

Chapter 4-3-6 DDNS

The DDNS service allows you to automatically update the DNS server. LILIN provides three DDNS servers to choose from (we recommend you use the first one from the drop-down menu). Click Submit for the changes to take effect.

Basic >> Network >> DDNS	
Server Name	<input type="text" value="http://www.ddnsipcam.com"/>
DDNS	<input type="radio"/> Enable <input checked="" type="radio"/> Disable
Account	<input type="text" value="570218"/>
Password	<input type="password" value="••••"/>
Confirm Password	<input type="password"/>
Host name	<input type="text" value="570218"/>
	http://570218.ddnsipcam.com
WAN IP	<input type="text"/>
<input type="button" value="Update"/>	
<input type="button" value="Submit"/>	

Note: The DDNS feature requires Internet connection.

To activate DDNS, go to www.ddnsipcam.com. If the IP camera is on Internet with a global IP address, use the last 6 digits of the MAC address as the host name with default account and the default password. The IP camera will automatically register to www.ddnsipcam.com.

Chapter 4-3-7 SNMP

Enable to activate SNMP service. Modify the fields to fit your requirements, and click Submit for the changes to take effect.

Chapter 4-3-8 SIP VoIP

SIP protocol provides video and audio communication for the IP camera to a SIP phone via SIP server. Enable VOIP service by entering the required information.

- **SIP Domain Server:** The IP address or DNS of the SIP server
- **SIP Server Port:** The port number of the SIP server
- **Register Name:** The user account (extension) registered on the SIP server
- **Register Password:** The password of the registered user account on the SIP server
- **SIP URL:** The URL of the registered account
- **Register Expiration Time:** The time expired in second for registering the SIP server
- **Local SIP Port:** The port number of the SIP service on the IP camera
- **Audio RTP Port:** The port number of the audio RTP stream
- **Video RTP Port:** The port number of the video RTP stream
- **DTMF Receiving:** The protocol of SIP DTMF
- **DTMF Code (0-9, #, and *):** The DTMF code for triggering the DO on the camera by a SIP client
- **Force to end call (sec):** The time in second for terminating a incoming call
- **Extension:** The SIP clients for communicating with the IP camera
- **Remote Username:** The SIP account of a SIP extension
- **SIP URL:** The SIP URL of a SIP extension
- **Call Status:** The status of incoming or outgoing SIP communication

Note: Two-way audio model only

Note: Early media of the SIP is supported.

In the Maintenance page, you can click Load Default to restore the camera to factory settings, or click Reboot System to restart the camera. Restoring to factory settings does not affect IP addresses.

To export camera settings, click on Export Config File for other cameras. Click on Import Config File for importing camera settings.

To update the firmware of your IP camera, click Browse and locate the update file. Click Submit to start the firmware update.

Warning: Never disconnect the power during the update. This could cause irreversible damage to your device.

Note: If you forget your password, please contact your vendor or send the device to us.

Chapter 5 Advance Mode

The Advanced Mode provides several professional settings that are not available in the Basic Mode.

Chapter 5-1 System



Chapter 5-1-1 System Log

You can view the system-generated log in this page. Click Save to export the log to a text file.

Advance >> System >> System Log

Search

Page 1

IP Position	User	Date	Log Info
192.168.0.22	admin	2019/05/09 15:31:41	STREAM LOGOUT ENCODER 2 (SYSTEM MESSAGE)
192.168.0.22	admin	2019/05/09 14:35:20	USER LOGIN ENCODER 1 (SYSTEM MESSAGE)
192.168.0.22	admin	2019/05/09 14:25:42	STREAM LOGOUT ENCODER 1 (SYSTEM MESSAGE)
192.168.0.22	admin	2019/05/09 14:24:54	USER LOGIN ENCODER 1 (SYSTEM MESSAGE)
		2019/05/09 14:22:13	POWER ON (SYSTEM MESSAGE)

Save

Chapter 5-2 Video/Audio Settings



Live | Basic Mode | Advance Mode | Language | Logout

System

Video / Audio

Network

SmartEvent

Notification

Maintenance

Note: Setting options may differ depending on the model you use.

Chapter 5-2-1 Quality Advanced

In this page, you have access to Exposure, Automatic Gain Control, White Balance Control, Sense Up, Shutter Speed, IR-Cut, and Iris settings allowing you to adjust camera video quality for day and night.

The camera provides two sets of video quality database for day or night mode. This is very useful settings for video quality especially for ANPR/LPR application where the shutter speed can be customized at night. The video quality settings can be applied by Day and Night Switch explained later in this chapter.

Day Mode | Night Mode

Back-light Compensation

Exposure Value 4

WDR Off

P-Iris Mode Off

P-Iris Close : 0 (FNO : 1.84)

Shutter Value Range Auto (1/60 ~ 1/30000)

Auto Gain Control(SENSE UP+) 42dB

Sense Up Off

Color Mode Color

IR LED1 0

IR LED2 0

IR Cut Filter On

Overexposure Reduction Off

Video setting options are described as follows:

- **Back-light Compensation:** increases the exposure of objects with insufficient light
- **Exposure Value:** adjusts the value of exposure; the higher the value is set, the brighter the video is
- **WDR:** enables or disables Wide Dynamic Range to capture greater details
- **P-Iris Mode:** turn on to enable auto iris adjustment
- **Shutter Value Range:** set the min and max shutter values
- **Auto Gain Control (Sense Up+):** see the below description
- **Sense Up:** select the level of Sense Up to enhance the video
- **Color Mode:** switch between color/black-and-white mode
- **IR LED1:** Outer IR LED control
- **IR LED2:** Inner IR LED control
- **IR Cut Filter:** enable/disable the IR cut filter
- **Overexposure Reduction:** suppress exposure caused by strong IR

Without Sense Up



Sense Up by 3 Frames



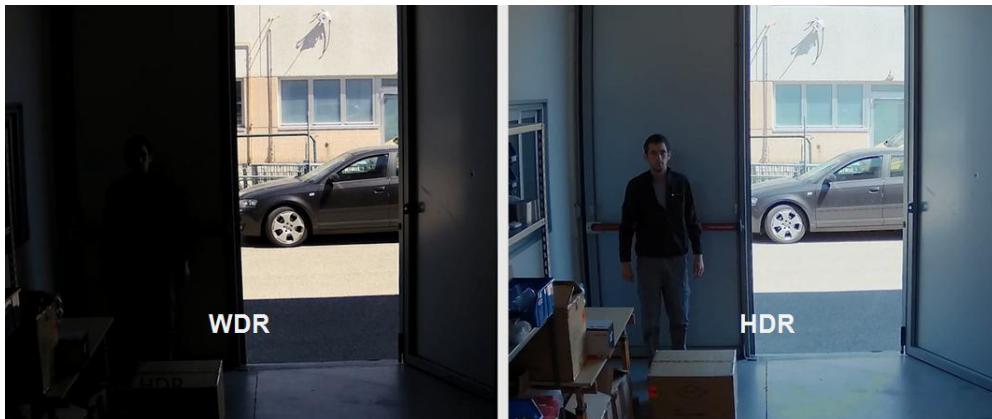
Chapter 5-2-1-1 Sense Up+

Sense Up+ (AGC) is a low-light and high-sensitivity DSP control that enables outstanding video quality even in low-light environments. Sense Up+ technology can be used for both black-and-white and/or color video modes. To enable Sense Up+, first enable Auto Gain Control (AGC). Use Sense Up+ with 3D noise reduction (3D DNR) can reduce noise that occurs in low light environments. AGC and 3D DNR do not cause motion blur. If the picture is still too dark under the environment, turn on Sense Up (slow shutter) instead, however, it may cause motion blur in low-light conditions.



Chapter 5-2-1-2 HDR vs WDR

LILIN camera contains HDR or WDR for strong back light environment. Turn on HDR mode if the camera points to strong light environment.



Live | Basic Mode | Advance Mode | Language | Logout

System
Video / Audio
Network
SmartEvent
Notification
Maintenance

General

Quality Basic

Quality Advance

White Balance Control

Auto Focus

Day Night Mode Switch

ROI

Privacy Mask

Audio Adjust

Lens Distortion Correction

Advance >> Video / Audio >> General

H.264 Encoding Mode : Main Profile High Profile

Encoder2 : Enable Disable

Encoder3/TV Out : Disable/(TV Out Enable) Enable/(TV Out Disable)

Video Standard : 60Hz 50Hz

Image Enhance Mode :

Note: Above HDR is only available at 100dB and up cameras.

Note: Once HDR mode is activated, video frame rate and resolution get dropped.

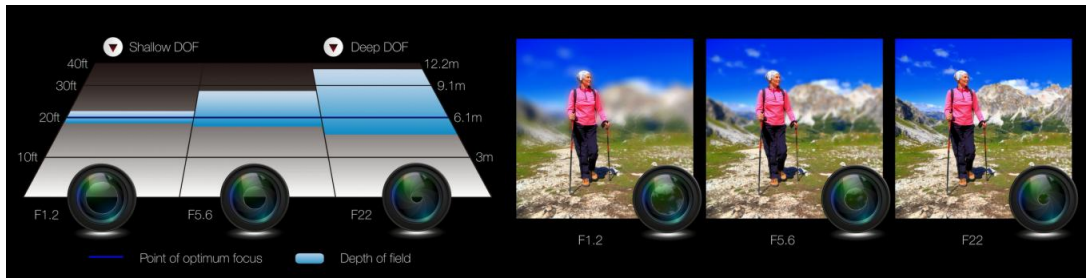
Chapter 5-2-1-3 P-Iris

P-Iris of a camera can precisely controls the aperture of the lens getting deeper depth of field (DOF) for city traffic management, school surveillance, and ANPR applications. P-Iris provides excellent video quality than traditional DC-Iris for day-n-night, especially for twilight environment.





The following diagrams demonstrates that P-Iris automatically chooses correct Iris or F value for the best FOV.



There are two P-Iris modes: Fixed and Auto.

Day Mode		Night Mode	
Back-light Compensation		Edit	
Exposure Value	4	▼	
WDR	Off	▼	
P-Iris Mode	Off	▼	
	Fixed	▼	
	Auto	▼	
Shutter Value Range	Auto (1/60 ~ 1/30000)	▼	
Auto Gain Control(SENSE UP+)	42dB	▼	
Sense Up	Off	▼	
Color Mode	Color	▼	
IR LED1	0	▼	
IR LED2	0	▼	
IR Cut Filter	On	▼	
Overexposure Reduction	Off	▼	
Load Default			

With Fixed P-Iris mode, the Iris (F value) can be specified.

P-Iris Mode	Fixed	▼
P-Iris Wide	0 (FNO : 2.69)	P-Iris Close : 0 (FNO : 2.69)
P-Iris Shutter	1/10000	▼

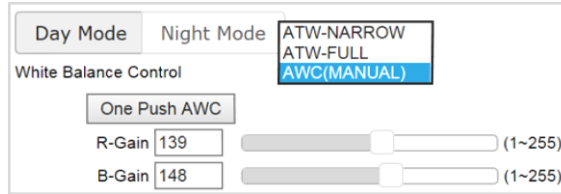
With Auto P-Iris mode, the Iris is automatically determined.

P-Iris Mode	Auto	▼
P-Iris Wide	-1 (FNO : undefined)	P-Iris Close : 0 (FNO : 2.69)
P-Iris Gap	1	▼
Shutter Value Range	Min 1/30000	▼
Auto Gain Control(SENSE UP+)	42dB	▼

Note: P-Iris camera only

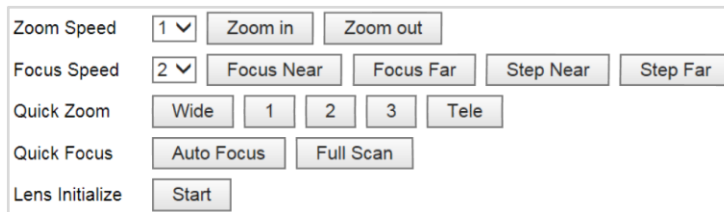
Chapter 5-2-2 White Balance Control (AWB)

There are day time and night time auto white balance controls (ATW) for the camera.



- **White Balance Control:** ATW-Narrow for narrow spectrum tracking white balance, ATW-Full for full spectrum tracking white balance, and manual AWB
- **One Push AWC:** Focus once for auto white control
- **R-Gain:** Red gain specific auto white control
- **B-Gain:** Blue gain specific auto white control

Chapter 5-2-3 Auto Focus

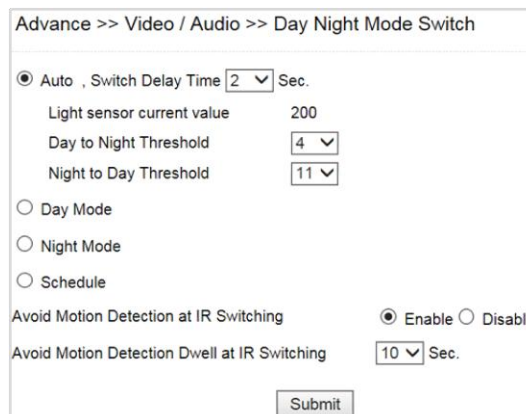


Here you are allowed to change the settings of autofocus functions for autofocus-supported cameras.

- **Zoom Speed:** Set the speed for **Zoom In** and **Zoom Out**
- **Focus Speed:** Set the speed for **Focus Near** and **Focus Far**
- **Quick Zoom:** Zoom to the ratio you specified
- **Quick Focus:** Click to focus automatically
- **Lens Initialize:** Click to reset zoom speed, focus speed, and zoom ratio to factory defaults

Chapter 5-2-4 Day/Night Mode Switch

The Day/Night Mode Switch allows you to schedule IR activities by (1) auto, (2) day, (3) night, (4) schedule, or (5) external control. When the setting is set to Auto, the IR module is turned on/off automatically according to the signal from the light sensor. The Night setting removes the IR cut filter, and the Day setting keeps the filter on. If you choose Schedule, the filter turns on/off according to the set time period.



Note: IR-cut camera model only

Chapter 5-2-5 ROI

LILIN camera supports the Region of Interest (ROI) function. Click Enable ROI to enable the function, and use the arrow buttons to move the view for each preset.



- **Stream Profile:** choose the stream format for the ROI
- **Preset:** provides 16 ROI presets to choose from
- **Dwell Time:** the amount of time the camera stays on the ROI
- **Speed:** the speed for the camera to move to the ROI

Click Save for the changes to take effect, or Clear all to clear all the settings

Note: Options may differ depending on the model you use.

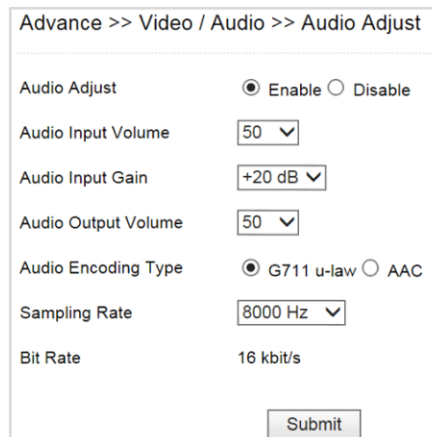
Note: By enabling privacy masking, ROI will be turned on automatically, and EPTZ will be disabled.

Chapter 5-2-6 Privacy Masking

LILIN camera provides up to 4 sets of privacy masking. Select any of the masking numbers and drag to mask specific areas.



Chapter 5-2-7 Audio Adjust



Audio settings are described below in details:

- **Audio Input Volume:** MIC or line-in volume
- **Audio Input Gain:** level of gain for audio input
- **Audio Input Filter:** provides three levels of wind noise reduction for different installation environments
- **Audio Output Volume:** volume adjustment
- **Audio Coding Type:** G.711 u-Law and AAC
- **Sampling rate:** set the audio sampling rate
- **Bit Rate:** 16 Kbit/s

Note: Audio model only

Chapter 5-2-8 Lens Distortion Correction

Lens distortion correction (LDC) is software based wide lens distortion correction via DSP/ISP. Retail application normally requires a wide angle lens (1.8mm~2.2mm) for its video. LDC feature allows correcting the distortion. Click Zoom and Strength features for the correction.

Live | Basic Mode | Advance Mode | Language | Logout

System Video / Audio Network Event Notification Maintenance

General

Quality Basic

Quality Advance

Day Night Mode Switch

ROI

Privacy Mask

Lens Distortion Correction

Advance >> Video / Audio >> Lens Distortion Correction

Lens Distortion Correction Mode Enable Disable

Strength : 80 (Low / High)

Zoom : 50 (In / Out)



Warning: LDC feature does not support 4:3 resolution ratio for the main stream. For LED feature, please set the main stream at 16:9 resolution ratio.

Chapter 5-3 Network

Chapter 5-3-1 Multicast

LILIN camera supports video streaming of 4 different content formats. Under this page, you can configure the settings for individual streams.

Advance >> Network >> Multicast

H2641080P	IP Address	239.0.0.0
	Video Port	1234
	Video Port RTCP	1235
	Audio Port	1236
	Audio Port RTCP	1237
	TTL	5
JPEG480P	IP Address	239.0.0.0
	Video Port	1234
	Video Port RTCP	1235
	Audio Port	1236
	Audio Port RTCP	1237
	TTL	5
H264480P	IP Address	239.0.0.2
	Video Port	5568
	Video Port RTCP	5569
	Audio Port	5570
	Audio Port RTCP	5571
	TTL	5
JPEGCIF	IP Address	239.0.0.3
	Video Port	5572
	Video Port RTCP	5573
	Audio Port	5574
	Audio Port RTCP	5575
	TTL	5

Submit

Chapter 5-3-2 IP Address Filtering

LILIN camera provides an IP address filter to help you block unauthorized IP addresses from accessing the camera. Enable the service before you enter the IP address you want to block, and press Add. Click Delete to remove an IP address from the list.

Advance >> Network >> IP Address Filtering

IP Address Filtering Enable Disable

IP Address Add Delete

192.168.0.100

Chapter 5-3-3 UPnP Settings

The UPnP service is a network protocol that allows Windows PC users to identify IP cameras in a LAN environment. To activate the UPnP service, choose Enable to activate.

Basic >> Network >> UPnP

UPnP Service Enable Disable

Friendly Name UPnP IPCam Device

Submit

In Windows, go to Network→File Explorer to see the IP cameras via the UPnP protocol.

Chapter 5-3-4 Bonjour

Bonjour is Apple's implementation of zero-configuration networking protocol. Click Enable to activate this service.

Advance >> Network >> Bonjour

Bonjour Enable Disable

Friendly Name

Chapter 5-3-5 SDDP/Heartbeat

With SDDP/Heartbeat support, you can connect to any compatible devices. Enable the service before you make the connection.

Advance >> Network >> SDDP / Heartbeat

SDDP Service Enable Disable

Heartbeat Service Enable Disable

Heartbeat Server

Heartbeat Port

Heartbeat Dwell Time Sec.

Chapter 5-3-6 MAC Address Filtering

For preventing a remote client access, enable MAC address filter. You can only allow a video client by specifying the Allow MAC address.

Advance >> Network >> MAC Address Filtering

MAC Address Filtering Enable Disable

Allow / Deny Allow Deny

MAC Address

MAC Address

Chapter 5-3-7 IEEE 802.1x

IEEE802.1x provides security access to the camera.

Advance >> Network >> IEEE 802.1x

IEEE 802.1x Enable Disable

Here you can configure the detection settings for alarm, motion, tampering, facial, audio, and network failure. Choose an event type for entering the event name and event condition for firing an alarm. Click Save button for saving the event.

Advance >> Event >> SmartEvent

Event 1 | Event 2 | Event 3 | Event 4 | Event 5

Enable Event

Event Name

Condition 1 | Condition 2 | Condition 3 | Condition 4 | Condition 5

Condition Name

Trigger | Schedule | Action

Detection Time Sec. Sleep Time Sec.

Enable	Trigger	Not
<input type="checkbox"/>	Alarm Detection	<input type="checkbox"/>
<input checked="" type="checkbox"/>	Motion Detection	<input type="checkbox"/>
<input type="checkbox"/>	Tampering Detection	<input type="checkbox"/>
<input type="checkbox"/>	Audio Detection	<input type="checkbox"/>
<input type="checkbox"/>	Network Detection	<input type="checkbox"/>

Then the page you see allows you to choose the action to take when the chosen events are detected, such as sending JPEG images to an FTP server or an email account, and/or triggering SD card video recording. To schedule event monitoring, choose Schedule when you edit an event and highlight the time periods you want the camera to detect events. Click Save button for saving the event.

Trigger | Schedule | Action

Enable Holiday List

Select	Schedule	Start Time	End Time
<input checked="" type="checkbox"/>	All	0:0	23:59
<input type="checkbox"/>	All	0:0	23:59
<input type="checkbox"/>	All	0:0	23:59
<input type="checkbox"/>	All	0:0	23:59
<input type="checkbox"/>	All	0:0	23:59
<input type="checkbox"/>	All	0:0	23:59

Trigger | Schedule | Action

Action FTP Service Dwell Time Sec.

SMTP Service Dwell Time Sec.

SD Card Service

SAMBA Service

Alarm Output Dwell Time Sec.

HTTP POST Service Dwell Time Sec.

SNMP Trap Service

Push Service Dwell Time Sec.

Chapter 5-4-1 IVS

The camera provides IVS features including tampering detection, audio detection, tripwire, and object counting. The features are described below:

Advance >> Event >> IVS

- Motion Detection, Tampering Detection
- Advanced Motion Detection (Less false alarm at night)
- Tripwire, Traffic Light Detection
- Object Counting

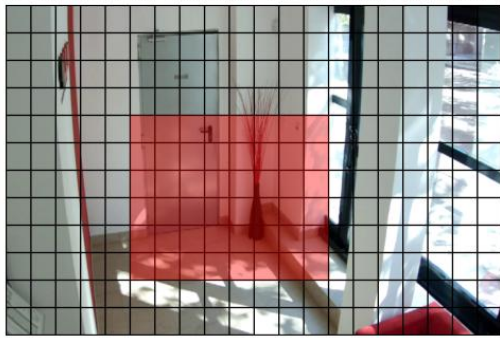
The OSD of streaming #4 is disabled, if Motion Detection gets enabled.

Submit

Chapter 5-4-2 Motion Detection

Once the above configurations are set, click Motion Detection to determine the areas to monitor. Simply double-click or drag across the areas you want to monitor, and cancel your selection by double-click again or drag across the areas you don't want to monitor with the right mouse button.

Advance >> Event >> Motion Detection



Motion Detection Enable Disable
Motion Sensitivity(Low:99-High:1)

Submit Clean

Chapter 5-4-3 Face Detection

When the camera detects any human faces, an alarm will be triggered and sends a notification message. This page allows you to determine the size of faces to be detected and detection sensitivity.

Face Detection Enable Disable
Face Detection OSD Enable Disable
Face Detection Range
Face Detection Sensitivity (High:1~Low:30)

Submit

- **Face Detection OSD:** When a face is detected, a blue box will appear to mark the face (as in the image below). If disabled, you will only see a red **F** icon on the top of the screen.



- **Face Detection Range:** Adjust the size of human face that will trigger the alarm.
- **Face Detection Sensitivity:** Adjust the sensitivity according to your needs.

Note: Face detection model only

Chapter 5-4-4 Tampering Detection

Tampering Detection	<input checked="" type="radio"/> Enable	<input type="radio"/> Disable
Tampering Detection Time	5 Sec.	
Tampering Detection Dwell	10 Sec.	
Submit		

LILIN camera can send tamper alarms when the focus or view of the camera is changed, or the lens is obstructed by paint or stain. Click Enable to activate this function and configure the settings.

Chapter 5-4-5 Audio Detection

When the detected sound exceeds the sensitivity level, the audio detector will trigger an alarm and send a notification.

Advance >> Event >> Audio Detection

Audio Detection	<input checked="" type="radio"/> Enable	<input type="radio"/> Disable
Audio Detection OSD	<input checked="" type="radio"/> Enable	<input type="radio"/> Disable
Audio Detection Trigger Level (Easy:1~Hard:99)	50	
Audio Detection Sensitivity (Low:1~High:99)	50	
Submit		

Note: Audio model only

Chapter 5-4-6 Alarm Detection

If you connect an external digital alarm input to the IP camera, set NO (normally open) and NC (normally closed) for the input.

Advance >> Event >> Alarm Detection

Alarm Input Mode NO NC

Chapter 5-4-7 Network Detection

For network loss detection, please enable No Network Detection if there is no network activity. If you want to detect the event when there is no streaming accessed by a video client, enable No Streaming Connection Detection. You can add the network detection event for the camera.

Advance >> Event >> Network Detection

No Network Activity Disable
 No Network Detection
 No Stream Connection Detection

Chapter 5-4-8 Push Service Setting

For iOS and Android push notification, Push Service Setting provides the information if a mobile phone accessed the camera. You can delete the connection as wish.

Advance >> Event >> Push Service Setting

Key Version 20180523

iOS			
Number	ID	Action	Status
1		<input type="button" value="Delete"/>	
2		<input type="button" value="Delete"/>	
3		<input type="button" value="Delete"/>	

Android			
Number	ID	Action	Status
1		<input type="button" value="Delete"/>	
2		<input type="button" value="Delete"/>	
3		<input type="button" value="Delete"/>	

Chapter 5-5-1 FTP Service

Enter the required FTP information to send alarm snapshots to an FTP server.

Advance >> Notification >> FTP Service

FTP Server Name	FTP/DNS Server	Port
FTPServerName	ftp.server.com	21
FTP2ServerName	ftp.server2.com	21
FTP3ServerName	ftp.server3.com	21

FTP Channel: 1

FTP Server Name: FTPServerName

FTP/DNS Server: ftp.server.com

FTP/DNS Server Port: 21

Account: Account

Password: *****

Directory: /alarm_peg/

Date Format: YYMMDD_hhmmss

Prefix:

Postfix:

File Format: Encoder4

Auto FTP Sent: Enable Disable

Auto FTP Sent Dwell time: 1 Hour

Submit

- **FTP Channel:** There are three FTP servers that can be configured
- **FTP Server Name:** The name of the FTP server
- **FTP Server:** IP address or domain name of the FTP server
- **FTP/DNS Server:** The FTP server's address
- **FTP/DNS Server Port:** The FTP server's port number
- **Account:** account name to log in to the FTP server
- **Password:** password of the account
- **Directory:** file path for storing the JPEG snapshots
- **Date format:** date string for the JPEG filename
- **Prefix:** prefix of the JPEG filename
- **Postfix:** postfix of the JPEG filename
- **File Format:** JPEG file format based on different JPEG encoder
- **Auto FTP Sent:** Continuous FTP JPEG notification
- **Auto FTP Sent Dwell Time:** Dwell for sending FTP JPEG notification

Chapter 5-5-2 SMTP (Email) Service

For alarm notification with JPEG snapshots, enter the required information to enable this Email notification service.

Advance >> Notification >> SMTP Service

E-mail Receiver Setting

E-mail Address1: receiver@mail.com

E-mail Address2: []

E-mail Address3: []

E-mail Address4: []

E-mail Address5: []

E-mail Sender Setting

E-mail Address: sender@mail.com

SMTP Server: mail.com

SMTP Authentication: AUTH LOGIN AUTH SSL AUTH TLS

SMTP Port: 25

Authentication: Enable Disable

Auth Account: sender

Auth Password: []

Submit Send Mail & Status

Chapter 5-5-3 HTTP POST Service

Through the POST protocol, the camera can automatically send notification snapshots to a website if an alarm is triggered.

Advance >> Notification >> HTTP POST Service

HTTP POST Server Name: httpservername

HTTP POST Server IP/DNS: httpserver.com

HTTP POST Server Port: 80

Account: admin

Password: []

HTTP POST URL: /url

Attachment Format: JPEG Text

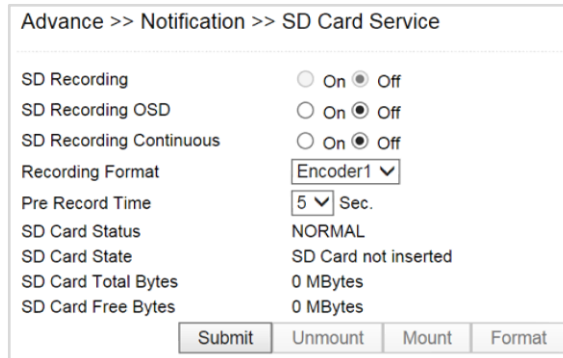
HTTP POST JSON: /json

Submit

- **HTTP POST Server Name:** The HTTP POST server
- **HTTP POST Server IP/DNS:** The IP/DNS address of the HTTP Post server
- **HTTP POST Server Port:** The port number of the HTTP Post server
- **Account:** the account
- **Password:** the password
- **Attachment Format:** JPEG snapshot or text mode
- **HTTP POST JSON :** The JSON text editor

Chapter 5-5-4 SD Card Service

Ensure a SD card is properly installed to the camera before you enable the SD recording option. The camera will start recording videos when an alarm occurs.

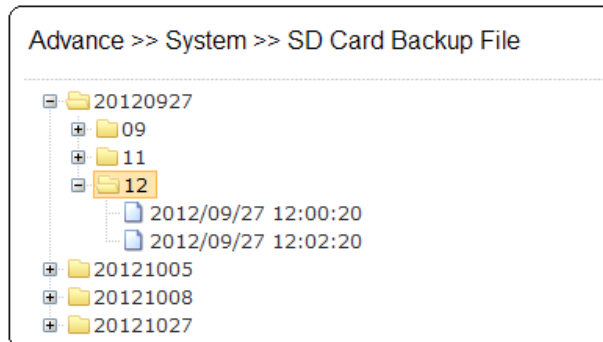


Warning: Ensure to click Unmount before removing the SD card, or the system may crash.

Note: SD card model only

Chapter 5-5-5 SD Card Backup

To download a specific clip, right-click the file you want to download and save the AVI file to a local PC.



Chapter 5-5-6 SAMBA Service

The streaming of the camera can be recorded as AVI files to a Samba server. Continuous and pre-alarm recordings are available. To do so, provide required information for Samba service. Circular recording is available for overwriting the oldest recording files if the Samba server gets full.

- **Samba Recording:** Enable Samba recording service.
- **Samba Recording OSD:** Timestamp OSD on the AVI files
- **Recording Format:** The resolution of the AVI files
- **Pre-record Time:** Pre-alarm recording based on the alarm settings
- **Samba Server IP:** The IP address of the Samba server
- **Samba Server's Port:** The port number of the Samba server
- **Samba Server Password:** The password of the Samba server
- **Samba Server Directory:** The target path of the recordings on the Samba server
- **Samba Status:** The connection status of the Samba server
- **Samba Total Bytes:** The storage size of the Samba server
- **Samba Free Bytes:** The free storage size of the Samba server

Advance >> Notification >> SAMBA Service

SAMBA Recording	<input type="radio"/> On <input checked="" type="radio"/> Off
SAMBA Recording OSD	<input type="radio"/> On <input checked="" type="radio"/> Off
SAMBA Recording Continuous	<input type="radio"/> On <input checked="" type="radio"/> Off
Recording Format	Encoder1 ▾
Pre Record Time	5 ▾ Sec.
SAMBA Server IP	192.168.0.100
SAMBA Server PORT	5000
SAMBA Server Account	admin
SAMBA Server Password	••••
SAMBA Server Directory	/Public
SAMBA Status	NORMAL
SAMBA State	SAMBA service is not connected
SAMBA Total Bytes	0 MBytes
SAMBA Free Bytes	0 MBytes
	http://192.168.0.100:5000
	Submit Disconnected Connected

Chapter 5-5-7 MQTT Service

The camera provides MQTT service. MQTT server is widely used by IoT applications. The camera provides MQTT service for (1) event notifications, (2) controls and (3) returns. The services of Publish and Subscribe are supported. For more programming information, visit web site for IP Camera MQTT SDK.

To configure MQTT service, follow the descriptions below:

- **MQTT Status:** Enable MQTT service of the camera
- **MQTT Server:** The MQTT server
- **MQTT Port:** The port number of the MQTT server
- **MQTT Client ID:** The client ID of the camera for uniqueness
- **MQTT UUID:** The MQTT UUID of the camera
- **Authentication:** Enable authentication for accessing the camera
- **Account:** The account for accessing the camera
- **Password:** The password for accessing the camera

Advance >> Notification >> MQTT Service

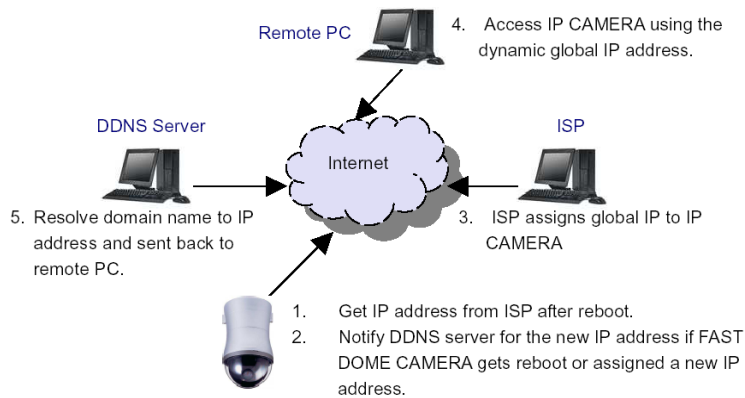
MQTT Status	<input type="radio"/> Enable <input checked="" type="radio"/> Disable
MQTT Server	mqtt.cc
MQTT Port	1883
MQTT Client ID	000ffc570218
MQTT UUID	570_000ffc570218
Authentication	<input type="radio"/> Enable <input checked="" type="radio"/> Disable
Account	admin
Password	pass
	Submit
Publish:	ipcam/570_000ffc570218/device/event
Subscribe:	ipcam/570_000ffc570218/device/event

Appendix

DDNS and PPPoE Network Settings

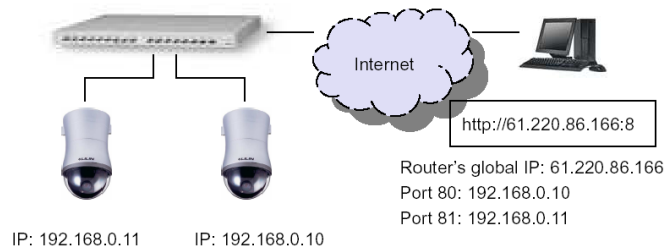
One of the advantages of adopting DDNS and PPPoE services is to save the cost of renting a global IP address. When you power on a camera with a video server and connect to the Internet with the PPPoE service, the camera asks your ISP for a dynamic global IP address. This Internet-accessible IP address will be renewed by the ISP every time you log on the Internet.

Whenever the IP is changed, the camera with the video server will notify the DDNS server of your new IP address. A remote user who intends to connect to the camera with the video server can enter the domain name in the web browser. The domain name will be translated to a new IP address to be used by the camera.



Advanced Port Forwarding Technology

Communication port forwarding technology has been widely used to share a global Internet IP to other devices on the network. The infrastructure of this technology is shown in the below figure, in which the port 80 of the IP router is forwarded to the device with an IP of 192.168.0.10, and the port 81 of the router is forwarded to the device with an IP of 192.168.0.11. When a remote PC on the Internet tries to access the port 81, the user is actually accessing 192.168.0.11, private IP given by the router.



Restore to Factory Default

To restore the IP camera to the factory default, follow the below procedures:

1. Short the "Restore to Factory Default RESET" cable for 10 seconds before releasing.
2. The camera will restart.
3. Launch to IPScan Utility to search for the IP camera.
4. Access the IP camera via an Internet browser.
5. Enter the default username and password.



SD Card Compatibility

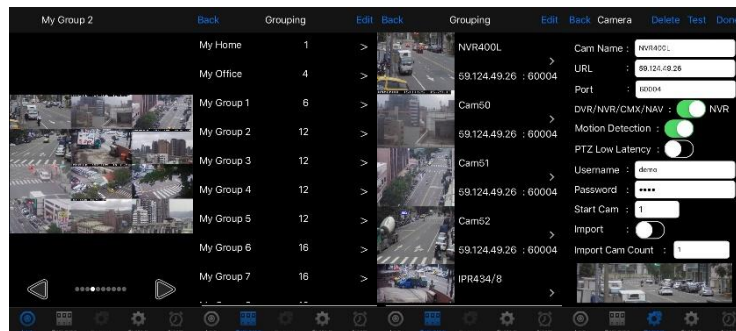
Manufacturer	Capacity	SDHC/SDSC
Sandisk	16GB	SDHC
Sandisk	8GB	SDHC
Transcend	8GB	SDHC
Transcend	4GB	SDHC
Sandisk	32GB	SDHC

For iPhone Users

Tap App Store, and search and download LILINViewer by Merit LILIN Ent. Co., Ltd. Or, you can scan the QR Code below.



Open LILINViewer, then choose tab Groupings. Select a group, choose a camera type, and add a camera.



Next, enter camera information as follows:

1. Cam Name: IP Camera or DVR camera name
2. URL: IP address
3. Port
4. Enter your username and password.

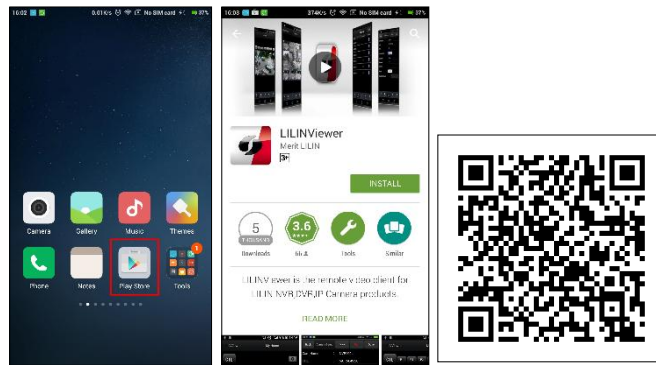
The default IP camera user name is admin, password pass. The default DVR user name is admin, password 1111.

After you enter the above information, tap Done to save the changes, and the live view of your IP camera or DVR will appear.



For Android Users

Tap Play Store to download LILINViewer by Merit LILIN, or scan the following QR code.



Open LILINViewer, then choose tab Groupings. Select a group, choose a camera type, and add a camera.



Next, enter camera information as follows:

1. Cam Name: IP Camera or DVR camera name
2. URL: IP address
3. Port
4. Enter your username and password.

The default IP camera user name is admin, password pass. The default DVR user name is admin, password 1111. After you enter the above information, tap Done to save the changes, and the live view of your IP camera or DVR will appear.